



UTILITIES DEPARTMENT

MONTHLY ACTIVITY REPORT

April 2026

Brush Creek Water Pollution Control Facility (BCWWTP)		
April 7, 2026	Operators adjusted impellor on raw sewage pump #125	
April 8, 2026	Plant staff cleaned intake air filters for process blowers (annual PM)	
April 8, 2026	Operators' acid flushed caustic feed line (biannual PM)	
April 9-13, 2026	Plant staff completed annual odor scrubber audits	
April 17, 2026	Operators replaced neat polymer feed pump for rotary drum thickeners	
April 28, 2026	Staff cleaning both north and south chlorine contact tanks	
Franklin Acres Pump Station	No operational issues reported.	
Briar Creek Pump Station	No operational issues reported.	
Wolfe Run Pump Station	No operational issues reported.	
Laurel Point Lift Station	April 22, 2026, LP generator no run status, further inspection determined that mice had chewed wiring harnesses and relays. When the generator tried to run on its scheduled test day it shorted out and also damaged the injection pump	
Water Supply	May 5, 2026 staff collected extra TTHM samples in the norther region of the distribution system	
**Commonly Used Acronyms	<small> IPS: Influent Pump Station, EPS: Effluent Pump Station, RDT: Rotating Drum Thickener, ATAD: Autothermal Thermophilic Aerobic Digestion, MCC: Motor Control Center FOG: Fats, Oils and Grease, OCV: Automatic Control Valve, NAASSC: National Association of Sewer Service Companies, BOD: Biochemical Oxygen Demand, RAS: Return Activated Sludge, MBR: Membrane Bioreactors, UPS: Uninterruptible Power Supply, FAPS: Franklin Acres Pump Station, WRPS: Wolfe Run Pump Station, BCTP: Brush Creek Treatment Plant POTW: Publicly owned treatment works, OTP: One time programmable, ORP: Oxidation Reduction Potential, PLC: Programmable Logic Controller, UPS: Uninterruptable Power Supply. TTHM: Total Trihalomethanes </small>	
PRETREATMENT & COLLECTION SYSTEM MAINTENANCE		
Industrial Users	Continually addressing any reporting issues or exceedances with IUs. Performing BOD testing at CUE following high sample results. 4 Industrial Pretreatment permits to be renewed in 2026. New local limits approved by EPA. Drafting formal adoption of new limits.	
Incoming FOG Users	Shake Shack, Giant Eagle Starbucks, Holiday Inn Express, Wegmans, Crash Champions	
Existing FOG Maintenance	Performing FOG permit renewal inspections. Site visits for "Non-compliant" and "No Pump Outs" FOG user. 15 establishments are currently non-compliant with their pump out schedule.	
Manhole and Pipeline Inspections	Performed CCTV sewer main inspections in Woodlands near Penn Power work area following electric conduit cross-bore with sewer main Manhole inspections being performed near force mains to identify H2S gas damage for remediation.	
Flow Metering	30 SmartCover flow monitors are installed on the interceptors and sub-basins. Coordinating maintenance with field crew.	
Sewer Repair & Maintenance	Interceptor 1 lining will continue later in 2026 Interceptor 7 lining completed. Processing post-lining CCTV footage. Will begin lining deteriorated manholes in 2026. Sewer main repairs on Lincolnshire Dr and Central Dr planned for 2026. Central Dr repair was delayed this month after finding damage was more extensive than we originally thought.	
Force Mains	Continuing to monitor sewer gas levels being discharged at each force main. Working with plant to adjust chemical feeds accordingly.	
Miscellaneous	Finalizing workflows associated with Point-of-Sale Program for sewer lateral certification. Ordinance to go to board in near future. Performing routine sewer Right-of-way clearing	
BACKFLOW PROGRAM		<i>Start Date: 2/7/2022</i>
Compliance Percentage:	68.73%*	Total non-compliant: 992
Total # of Devices: 1452	Total Tests Performed: 1758**	Total Tests Passed: 1705**

BRUSH CREEK SEWAGE TREATMENT PLANT

Flow History

** Flow is in millions of gallons mu Brush Creek Capacity 8.7 mgd Marshall Allocation .1.35 mg Purchased Water (West View) Annual allocation 4.150 MGD

NOTE: As of 7/9/2020 all flow data is based on Marshall Twp billing cycle and NOT monthly averages since billing is not based on a calendar month.

2026	12/8/25-1/8/26	1/08/26-2/10/26	2/10/26-3/09/2026	3/9/26-4/10/26	4/10/26-5/8/26	TO DATE								
B.C.T.P. FLOW	122.963	117.84	126.618	154.067	103.599									625.087
DAILY AVG.	3.967	3.571	4.690	4.8150	3.6999									20.7429
MARSHALL FLO	23.003	23.498	22.495	28.772	19.544									117.312
DAILY AVG.	0.742	0.7121	0.8331	0.8991	0.6980									3.8843
NEW SEWICKLE	0.392	0.367	0.253	0.290	0.268									1.57
DAILY AVG.	0.0126	0.0111	0.0094	0.0091	0.0096									0.0518
RAIN FALL	2.32	2.6	2.81	5.47	3.15									16.35
PURCHASED WA	112.112	123.679	89.481	96.624	92.059									513.955
DAILY AVG.	3.617	3.748	3.314	3.02	3.288									3.397

2025	12/09/25-1/10/25	1/10/25-2/7/25	2/7/25-3/7/25	3/7/25-4/14/25	04/14/25-05/08/25	05/8/25-6/9/25	06/09/25-07/08/25	07/8/25-08/8/25	08/08/25-09/08/25	09/8/25-10/8/25	10/8/25-11/07/25	11/7/25-12/8/25	TO DATE
B.C.T.P. FLOW	126.204	114.656	129.685	140.993	96.578	123.206	104.676	109.481	90.978	90.2710	98.327	107.234	1332.289
DAILY AVG.	3.9440	4.0950	4.632	3.7100	4.0241	3.8500	3.6100	3.5320	2.9348	3.0090	3.278	3.459	44.0779
MARSHALL FLO	21.144	17.941	21.619	27.69	15.648	12.584	18.573	19.78	17.489	18.451	19.62	21.508	232.047
DAILY AVG.	0.6608	0.6408	0.7721	0.7287	0.6520	0.6745	0.6404	0.6381	0.5642	0.6150	0.654	0.6938	7.9344
NEW SEWICKLE	0.334	0.298	0.244	0.339	0.223	0.350	0.190	0.167	0.347	0.258	0.251	0.173	3.1735
DAILY AVG.	0.0104	0.0106	0.0087	0.0089	0.0093	0.0109	0.0066	0.0054	0.0112	0.0086	0.0084	0.0056	0.1046
RAIN FALL	2.73	1.15	3.79	4.33	4.36	4.49	3.95	4.91	2.64	3.05	3.05	2.45	40.9
PURCHASED WA	93,260	85.010	82.677	110.972	78.074	110.057	106.582	116.232	130.011	125.044	113.031	107.784	1258.734
DAILY AVG.	2.914	3.036	2.952	2.92	3.253	3.439	3.675	3.749	4.194	4.168	4.297	3.477	3.506

NPDES Compliance History Report 2026
Brush Creek Water Pollution Control Facility

Limit mg/L	Parameter													Regulatory Compliance Y/N				
	CBOD 10/20*	Total Suspended solids 30	Ammonia Nitrogen 2/5*	Dissolved Oxygen 5 min	Phosphorus 2.0	Chlorine Residual 0.18	p standard units 6.0	H** 9.0	Flow MG/D 8.73	Fecal Coliform 200/100* 2100/100*	Total Nitrogen M&R	E. coli M&R	Free Cyanide M&R		Quarterly Parameter Hex Chromium M&R	Total Copper M&R	Dissolve Iron M&R	Total Zinc M&R
January	< 2.0	< 2.0	0.33	5.97	0.75	0	6.5	7.3	3.556	< 1.0	42.5	1	1	0.0008	< 0.005	0.04	0.02	Y
February	< 2.0	< 2.0	1.19	5.83	0.55	0	6.8	7.3	4.057	< 1.0	28.5	1	1					Y
March	< 2.0	< 2.0	0.279	6.22	0.87	0	6.8	7.1	4.760	< 1.0	29.1	1	<1.0					Y
April	< 2.0	< 2.0	0.0485	6.24	1.15	0	6.9	7.4	3.935	< 1.0	30.2	1	<1.0	<0.003	< 0.005	0.03	0.02	Y
May						0												
June						0												
July						0												
August						0												
September						0												
October						0												
November						0												
December						0												

M&R - Monitor and Report only

NOTE: ALL DATA (INCLUDING FLOW) VALUES ARE MONTHLY AVERAGES AS REQUIRED BY PERMIT

Definitions:

Ammonia Nitrogen	Ammonia nitrogen (NH ₃ -N) is a measure for the amount of ammonia; a toxic pollutant often found in sewage. It can also be used as a measure of the health of water in natural bodies such as rivers or lakes and creeks.
Chlorine Residual	Chlorine is added to kill harmful bacteria, residual chlorine even at low concentrations, can be toxic to aquatic life and must be removed.
Dissolved Oxygen	The dissolved oxygen (DO) is oxygen that is dissolved in water. It is essential for the survival of fish & other aquatic organisms.
Fecal Coliform	Coliform bacteria generally originate in the intestines of warm-blooded animals. Large quantities of fecal coliform bacteria in water may indicate a higher risk of pathogens being present in the water.
Flow	Average Daily Flow is the average of 24-hour volumes to be received by the wastewater system for a continuous 12-month period. Treatment plants are designed to operate at a certain hydraulic capacity.
pH	pH is measured by a logarithmic scale from 0-14. If the pH of water is too high or too low, the aquatic organisms living within it will die the majority of aquatic life prefer a pH range of 6.5-9.0.
Phosphorus	Phosphorus removal is vital to ensuring public safety and protecting the environment. Removal of this nutrient from waste streams is key to preventing eutrophication – a natural process inciting algae bloom.
Seasonal Limits	Recreational water quality criteria that provide an appropriate level of protection or those recreating in Pennsylvania's surface waters.
Total Suspended solids	Total suspended solids are any particles that floats or "suspends" in water, including sand, sediment, or organic matter. High solids entering a receiving water may decrease water's natural dissolved oxygen levels and increase water
Total Nitrogen	Nitrogen is found in human waste, foods, cleaning detergents and discharges from industrial and commercial sources. Urea/urine is the largest source of nitrogen in residential wastewater. Nitrogen is a nutrient and can cause algae

MAY UTILITY ACTIVITY REPORT

May 2026



CONNECT TAPS

Utilities completed 17 taps in Park Meadows, Breckenridge and Laurel Point since 4/23.



WATER MAIN BREAKS

We have not had a water main break in the past.



SERVICE LINE BREAKS

- 203 Kirkwood
- Alleyne Drive
- Clearbrook Court
- Haine School Fire Station



NON-COM

The utilities crew repaired/replaced 21 non communicating meters since 4/20.

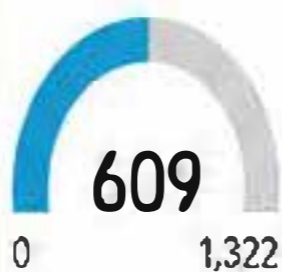


HYDRANT MAINTENANCE

The utilities crew have repaired 8 hydrants that were leaking through the flushing program.



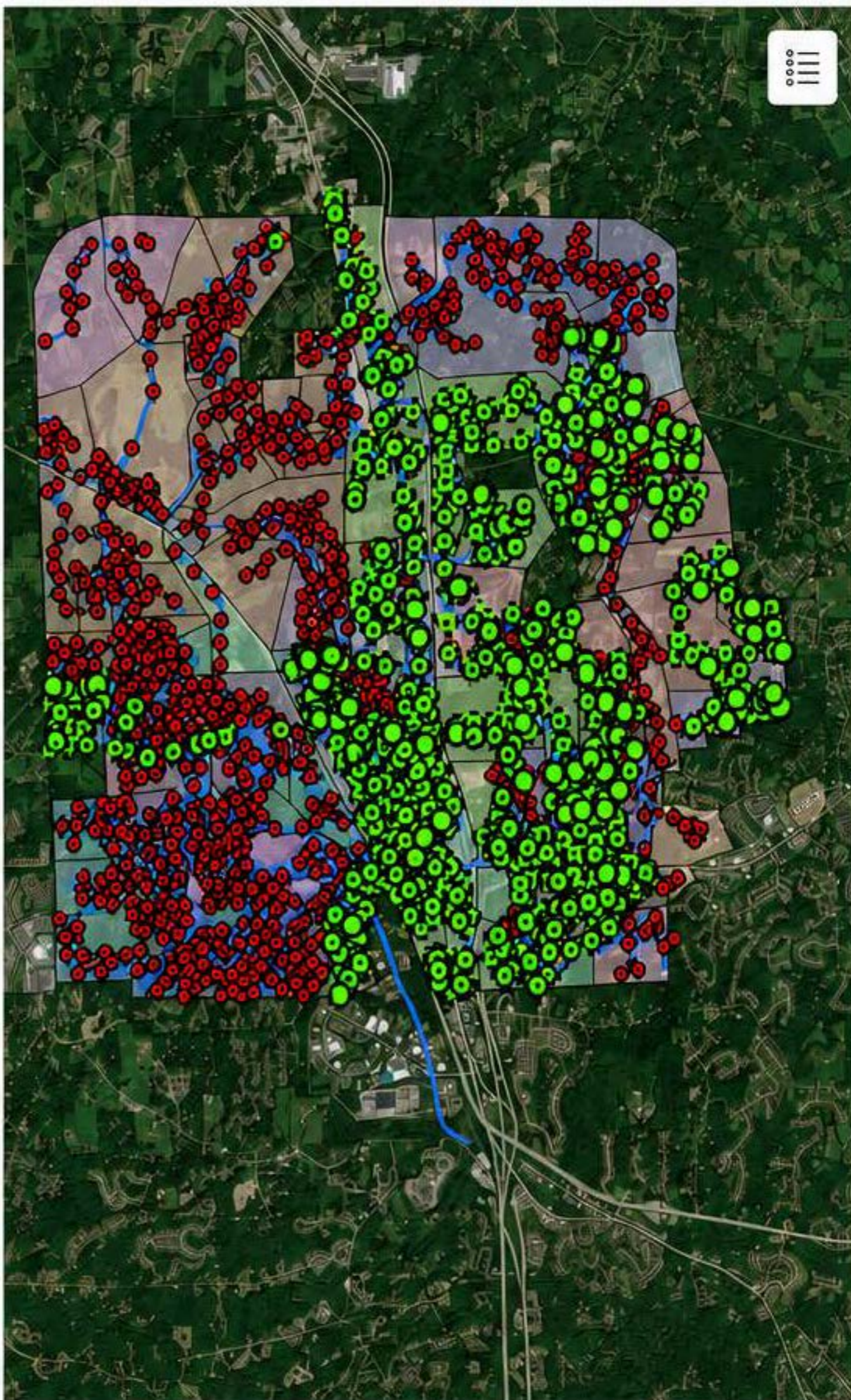
2026 FLUSHING PROGRAM



609 hydrants flushed

1,322 total hydrants

46% completed



Earthstar Geographics

Powered by Esri

2026 FLUSHING PROGRAM SUMMARY

HYDRANTS FLUSHED

609

TOTAL HYDRANTS

1,322

PERCENT COMPLETE

46%

LAST UPDATED

May 19, 2026

UTILITY ACTIVITY SUMMARY

Activity	Total
Meter Replacements	21
Meter Installs	19

PA ONE CALL UTILITY LOCATES

Monthly Utility Counts – May 2026

Entity	Tickets Received	Tickets Marked	Emergency Tickets	Design Tickets
Cranberry Township	–	–	2	–
USIC	397	153	26	7

Data is current as of May 19, 2026.