

LD-24-9/SUB-24-7 - Lifeway Baptist Church Parking Expansion



PRELIMINARY/FINAL LAND DEVELOPMENT FOR LIFEWAY BAPTIST CHURCH PARKING IMPROVEMENTS

CRANBERRY TOWNSHIP BUTLER COUNTY PENNSYLVANIA



LOCATION MAP
SCALE 1"=200'



HERBERT, ROWLAND & GRUBIC, INC.
220 WEST KENNINGER DRIVE
SUITE 100
CRANBERRY TOWNSHIP, PA 16066
724.778.4777 | hrg-inc.com

PRELIMINARY/FINAL LAND DEVELOPMENT
FOR
LIFEWAY BAPTIST CHURCH PARKING IMPROVEMENTS
LIFEWAY BAPTIST CHURCH OF PITTSBURGH
28 ROLLING ROAD
CRANBERRY TOWNSHIP, PA 16066
BUTLER COUNTY PENNSYLVANIA

Sheet List Table		
Sheet Number	Sheet Title	Sheet Description
01	COVER SHEET	CV-1
02	GENERAL NOTES	GN-1
03	LOT CONSOLIDATION PLAN	LC
04	EXISTING CONDITIONS PLAN	EC-1
05	DEMOLITION PLAN	DM-1
06	SITE LAYOUT PLAN	SI-1
07	GRADING AND DRAINAGE PLAN	GR-1
08	UTILITY PLAN	UT-1
09	PROFILES	PR-1
10	LANDSCAPING PLAN	LA-1
11	SITE DETAILS 1	DT-1
12	SITE DETAILS 2	DT-2
13	EROSION AND SEDIMENT CONTROL PLAN	ES-1
14	EROSION AND SEDIMENT CONTROL NOTES	ESNT-1
15	EROSION AND SEDIMENT CONTROL NOTES 2	ESNT-2
16	EROSION AND SEDIMENT CONTROL DETAILS 1	ESDT-1
17	EROSION AND SEDIMENT CONTROL DETAILS 2	ESDT-2
18	PCSM PLAN	PCSM-1
19	PCSM NOTES	PCNT-1
20	PCSM DETAILS 1	PCDT-1
21	PCSM DETAILS 2	PCDT-2
22	PCSM DETAILS 3	PCDT-3
23	PCSM DETAILS 4	PCDT-4
24	PCSM DETAILS 5	PCDT-5
25	PCSM DETAILS 6	PCDT-6
26	PCSM DETAILS 7	PCDT-7
27	ELECTRICAL DETAILS	E-1
28	ELECTRICAL SITE PLAN	E-2
29	ELECTRICAL SITE PLAN	E-3

PA ONE CALL
ACT 287, AS AMENDED



CONTRACTORS ARE NOT TO BE HELD RESPONSIBLE FOR ANY DAMAGE TO UTILITIES OR PROPERTY CAUSED BY ANY UNLAWFUL OR NEGLIGENT ACTIONS OR OMISSIONS.
THE FOLLOWING PRELIMINARY PA ONE CALL SERIAL NOS. HAVE BEEN ASSIGNED TO THIS PROJECT.
RESOURCES: SEE SERIAL NO. LISTINGS

PA ONE CALL-UTILITY LIST

CRANBERRY TOWNSHIP
COLUMBIA GAS OF PA, INC.
PITTSBURGH COMPOSITION
ARMSTRONG CABLE
ADAMS TOWNSHIP MUNICIPAL WATER AUTHORITY

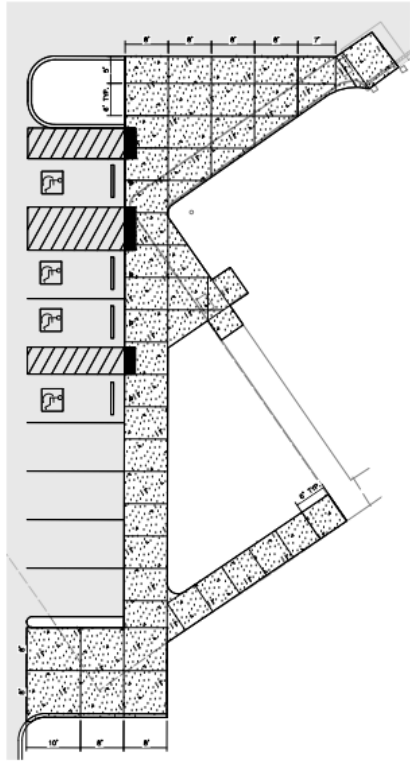
PROFESSIONAL SEAL



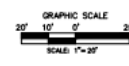
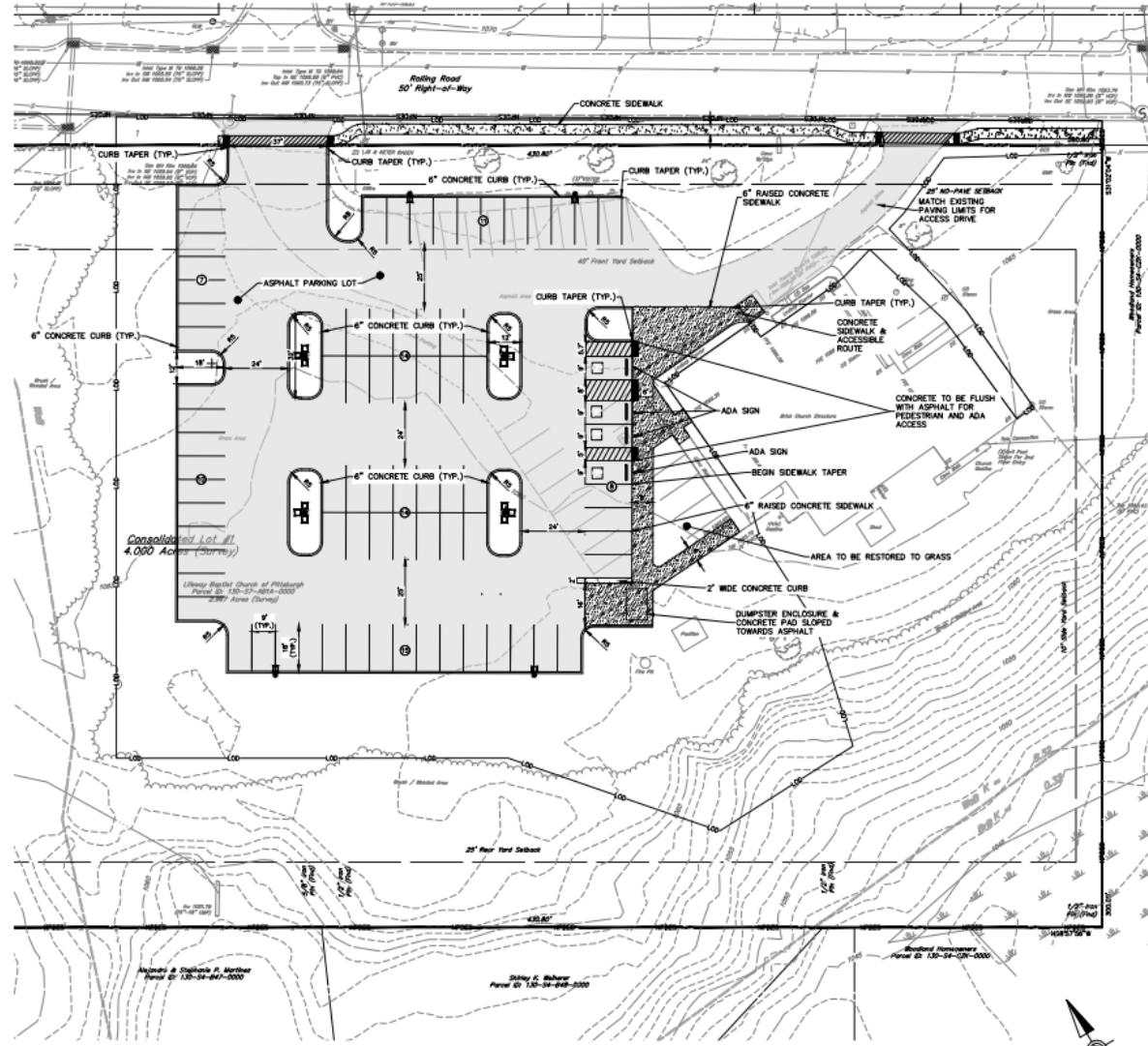
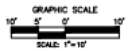
PROJ. PROJECT NUMBER: 202404022
PLAN DATE: APRIL 2024
DRAWING SCALE: AS SHOWN
PROJ. MANAGER: DANIEL J. BARINA

NO.	DATE	DESCRIPTION
1	11/14/23	ISSUED FOR PERMITS
2	11/14/23	ISSUED FOR PERMITS
3	11/14/23	ISSUED FOR PERMITS
4	11/14/23	ISSUED FOR PERMITS
5	11/14/23	ISSUED FOR PERMITS
6	11/14/23	ISSUED FOR PERMITS
7	11/14/23	ISSUED FOR PERMITS
8	11/14/23	ISSUED FOR PERMITS
9	11/14/23	ISSUED FOR PERMITS
10	11/14/23	ISSUED FOR PERMITS

SHEET TITLE:
COVER SHEET



CONTROL JOINT PLAN



LHRG
 HERBERT, ROWLAND & GRUBIC, INC.
 220 WEST KENSINGER DRIVE
 CRANBERRY TOWNSHIP, PA 16066
 724-778-4777 | hrg-nc.com

PRELIMINARY/FINAL LAND DEVELOPMENT
 FOR
 LIFEWAY BAPTIST CHURCH PARKING IMPROVEMENTS
 LIFEWAY BAPTIST CHURCH OF PITTSBURGH
 28 ROLLING ROAD
 CRANBERRY TOWNSHIP, PA 16066
 CRANBERRY TOWNSHIP BUTLER COUNTY PENNSYLVANIA



PROJECT NUMBER: 20240802.012
 PLAN DATE: APRIL 2024
 DRAWING SCALE: AS SHOWN
 PROJECT MANAGER: DANIEL J. BARINA

NO.	DATE	DESCRIPTION
1	MAR 2024	ISSUE FOR PERMITS COMMENTS
2		
3		
4		
5		
6		
7		
8		
9		
10		

SHEET TITLE:
SITE LAYOUT PLAN