

Park Place Revised Phase 8A/8B

Park Place Phase 8A & 8B As Per Resolution Plans

Cranberry Township, Butler County, Pennsylvania

Prepared For:

Park Place Marketing, LLC

Attn: Don Rodgers

215 Executive Drive, Suite 300

Cranberry Township, PA 16066

Phone: 724-776-2727

Final Subdivision and Land Development Submission: November 15, 2021

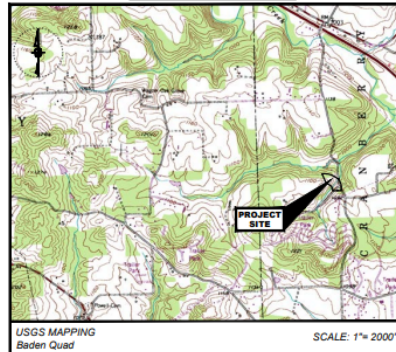
As Per Resolution Submission: April 14, 2022

Revised As Per Resolution Submission: July 5, 2022

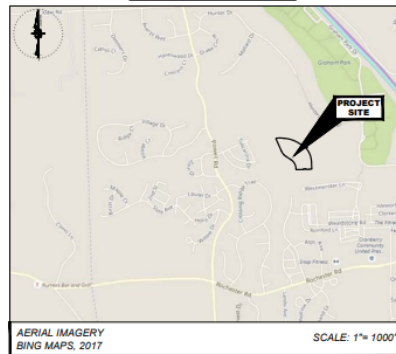
Revised As Per Resolution Plans: September 7, 2022

Lot Line Revision: February 07, 2023

SITE LOCATION MAP



SITE LOCATION MAP



DRAWING SCHEDULE

SHEET NO.	DRAWING TITLE
C000	TITLE SHEET
C010	GENERAL NOTES AND LEGEND
C100	EXISTING CONDITIONS PLAN
C200	PHASE 8A SITE LAYOUT PLAN
C210-C211	PHASE 8A ROAD PROFILES
C220	PHASE 8A STREET CROSS SECTIONS
C300	PHASE 8A GRADING PLAN
C400	PHASE 8A STORM SEWER PLAN
C410-C412	PHASE 8A STORM SEWER PROFILES
C500	PHASE 8A UTILITY PLAN
C510-C511	PHASE 8A WATERLINE PROFILES
C600	PHASE 8A SANITARY SEWER PLAN
C610-C611	PHASE 8A SANITARY SEWER PROFILES
C700-C704	PHASE 8A CONSTRUCTION DETAILS
C800	PHASE 8A TRAFFIC AND SIGNAGE PLAN
C801	PHASE 8A VEHICLE ROUTING PLAN
C802	PHASE 8A SAFE STOPPING PLAN
C900	PHASE 8A LANDSCAPE PLAN
C901	PHASE 8A LANDSCAPE ENLARGEMENTS
C910	PHASE 8A LANDSCAPE DETAILS
REC1	PHASE 8A RECORDED PLAN
REC2	PHASE 8A RECORDED PLAN
C200	PHASE 8B SITE LAYOUT PLAN
C210	PHASE 8B ROAD PROFILES AND SECTION
C300	PHASE 8B GRADING PLAN
C400	PHASE 8B STORM SEWER PLAN
C410	PHASE 8B STORM SEWER PROFILES
C500	PHASE 8B UTILITY PLAN
C510	PHASE 8B WATERLINE PROFILES
C600	PHASE 8B SANITARY SEWER PLAN
C610	PHASE 8B SANITARY SEWER PROFILES
C700-C704	PHASE 8B CONSTRUCTION DETAILS
C801	PHASE 8B VEHICLE ROUTING PLAN
C802	PHASE 8B SAFE STOPPING PLAN
C900	PHASE 8B LANDSCAPE PLAN
C901	PHASE 8B LANDSCAPE ENLARGEMENTS
C910	PHASE 8B LANDSCAPE DETAILS
REC1	PHASE 8B RECORDED PLAN
REC2	PHASE 8B RECORDED PLAN
ES1-ES6	EROSION AND SEDIMENTATION CONTROL PLANS
ES7-ES11	EROSION AND SEDIMENTATION CONTROL NOTES AND DETAILS
PCSM1-PCSM3	POST CONSTRUCTION STORMWATER MANAGEMENT PLANS
PCSM4-PCSM5	POST CONSTRUCTION STORMWATER MANAGEMENT DETAILS

C000



Sheffler & Company, Inc.
ENGINEERING • SURVEYING

1712 Mt. Nebo Road
Sewickley, PA 15143

Office Phone: 412-219-4509
Email: Info@ShefflerCo.com



