



— ◊ —

BRECKENRIDGE

PATTERN BOOK • VERSION 3 • 07/06/22



MAILBOX CLUSTER



BRECKENRIDGE SITE PLAN



ZONING DATA

SITE AREA 17.63 Acres

CCD (COMMUNITY CHARACTER DEVELOPMENT DISTRICT)
FREEDOM B (OVERLAY)

ZONING INFORMATION (CRANBERRY TOWNSHIP)

CCD WITH FREEDOM B OVERLAY
SINGLE FAMILY ATTACHED DWELLINGS/TOWNHOUSES

FLOOD ZONE CLASSIFICATION
ZONE - X

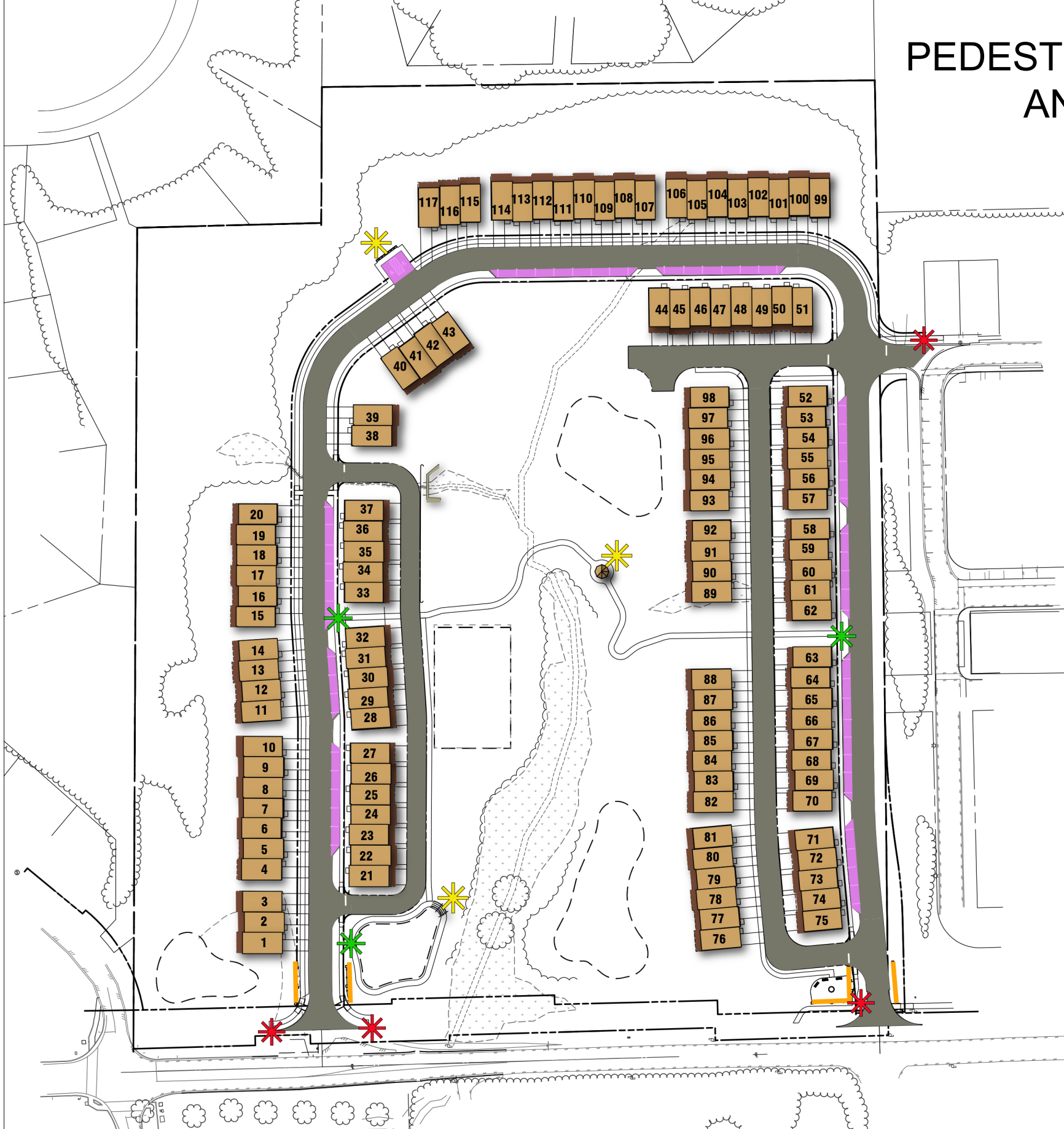
	REQUIRED	PROVIDED
MINIMUM ACREAGE	15 Acres	17.63 Acres
MAXIMUM GROSS DENSITY 10 UNITS PER ACRE	177 Units	112 Units
MINIMUM TO MAXIMUM COMMERCIAL AREA	5%	*0%
MINIMUM OPEN SPACE		
TOTAL 15%	15%	60.24%
ACTIVE OPEN SPACE	5%	5.05%
PASSIVE OPEN SPACE	5%	49.63%
GREENS, PLAZAS, OR SQUARES	5%	5.56%
MAXIMUM BUILDING HEIGHT		
STORIES	4 Stories	3 Stories
FEET	65 Feet	34 Feet
MINIMUM BUILDING HEIGHT (20 FEET OR 2 STORIES)	20 Feet	>20 Feet
MAXIMUM IMPERVIOUS AREA	85%	46%
MAXIMUM HEIGHT	50 Feet	35 Feet
BUILDING SETBACK		
PROPERTY LINE	50 Feet	> 50 Feet
BUILD TO LINE (6 TO 12 FEET)	6-12 Feet	6-12 Feet
BUILDING SEPARATION	12 Feet	12 Feet

This site plan is an artist's rendering and is for illustrative purposes only. All landscaping will be in accordance with the civil/landscaping drawings.



SITE PLAN OVERVIEW

PEDESTRIAN, STREET, AMENITY AND PARKING PLAN



- LEGEND**
- 6' Wide Bituminous Walking Trail
 - 5' Wide Concrete Sidewalk
 - 17' Wide Alley per RD-24
12' Wide Single Access Alley
*22' Wide Residential Street RD-26
 - On Street Parking
 - Amenity Location
 - Pedestrian Access Point
 - Walking Trail Access Point
 - Fence and Pier Street Wall per Exhibit 'B'
General Manual of Written and Graphic Design Guidelines
- *Waiver Requested



SITE PLAN OVERVIEW

This site plan is an artist's rendering and is for illustrative purposes only. All landscaping will be in accordance with the civil/landscaping drawings.

OPEN SPACE PLAN



Open Space Legend

- *Greens, Plazas and Squares
 - Passive Open Space
 - Active Open Space
- *Waiver Requested

This site plan is an artist's rendering and is for illustrative purposes only. All landscaping will be in accordance with the civil/landscaping drawings.



MENDELSSOHN

2 UNIT GRAND TOWNHOME

Welcome to the Mendelssohn, where the convenience of townhome living meets the amenities of a single family home. On the main living level, an enormous Country Kitchen with optional island opens onto a bright and airy Living Room, perfect for entertaining and featuring either a handy coat closet or a conveniently placed powder room. Upstairs are two spacious extra bedrooms with ample closet space and a hall bath, and a generous Owner's Bedroom that features an optional tray ceiling and a huge walk-in closet. A separate Owner's Bath features an optional dual vanity and optional oversized tub; or choose the opt. oversized shower. For a truly spa-like experience, select the Luxury Owner's Bath with separate soaking tub and shower. No matter what you choose, you'll still have a convenient 2nd floor laundry with room for side-by-side washer and dryer. Several lower level floor plans are available depending on community – all feature options for a finished Recreation Room, Study, and Powder Room or Bath.



NEIGHBORHOOD ARCHITECTURE



MENDELSSOHN

5 UNIT GRAND TOWNHOME

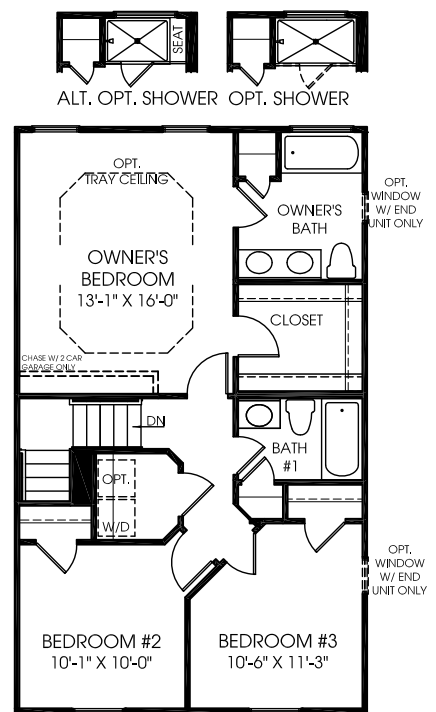
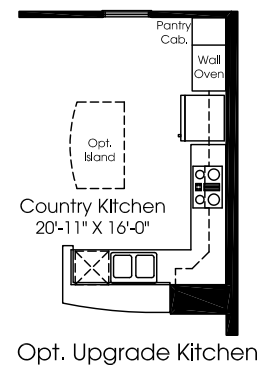
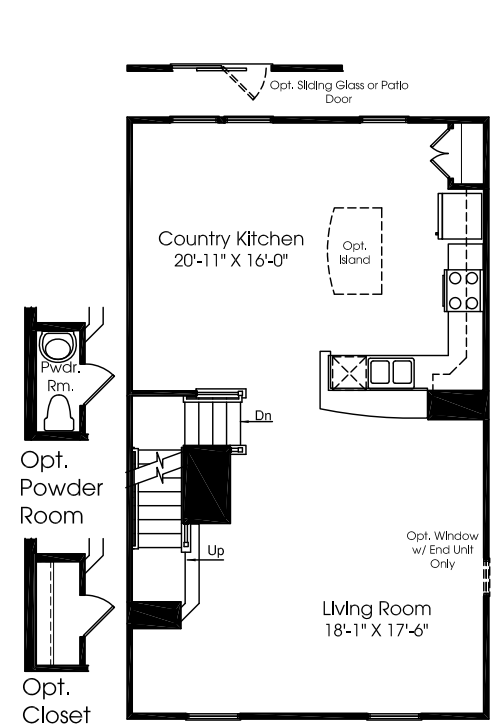
Welcome to the Mendelssohn, where the convenience of townhome living meets the amenities of a single family home. On the main living level, an enormous Country Kitchen with optional island opens onto a bright and airy Living Room, perfect for entertaining and featuring either a handy coat closet or a conveniently placed powder room. Upstairs are two spacious extra bedrooms with ample closet space and a hall bath, and a generous Owner's Bedroom that features an optional tray ceiling and a huge walk-in closet. A separate Owner's Bath features an optional dual vanity and optional oversized tub; or choose the opt. oversized shower. For a truly spa-like experience, select the Luxury Owner's Bath with separate soaking tub and shower. No matter what you choose, you'll still have a convenient 2nd floor laundry with room for side-by-side washer and dryer. Several lower level floor plans are available depending on community – all feature options for a finished Recreation Room, Study, and Powder Room or Bath.



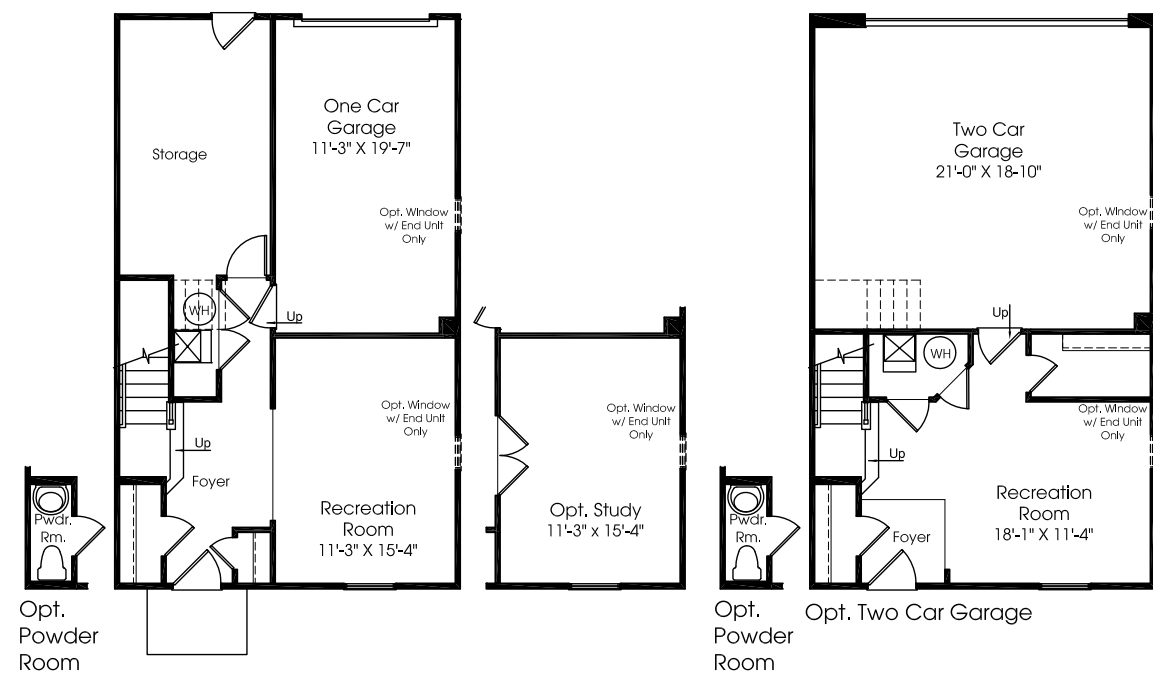
NEIGHBORHOOD ARCHITECTURE

MENDELSSOHN FLOORPLAN

Main Level



Upper Level



Lower Level





SCHUBERT

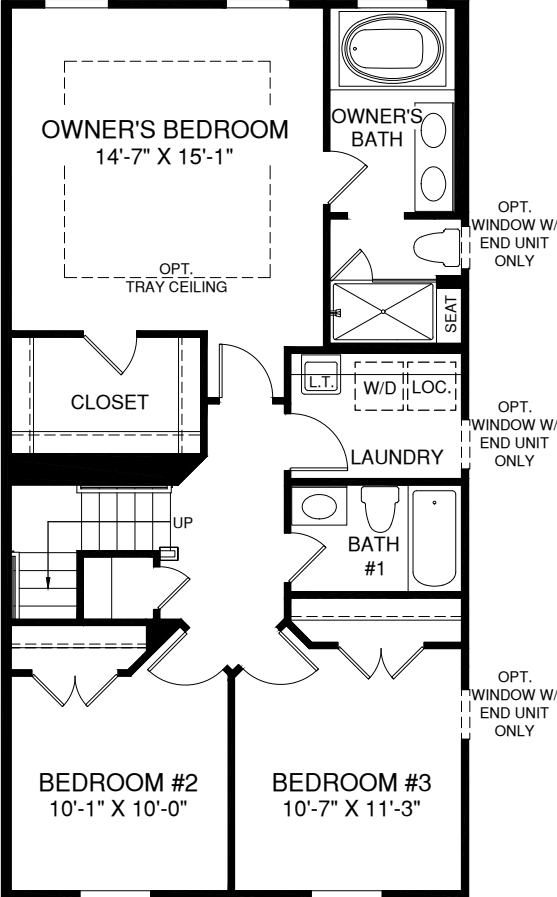
GRAND TOWNHOME

The Schubert, at the largest of the Composer II series homes, offers the space and customizing details of single-family living with the convenience of a townhome. On the main living level, you're greeted by an enormous and airy kitchen with a huge island perfect for entertaining. The dining room provides space for a more formal meal while the great room is perfect for movie night evenings at home. Up a flight of stairs designed to be elegant and functional, the upper level boasts three bedrooms, two baths, and a full sized 2nd floor laundry with extra shelf space and an optional laundry tub. No need to worry about storage space – generous closets abound in both bedrooms. The Owner's Bedroom is a private retreat accented with an optional tray ceiling and featuring an enormous walk-in closet. The Owner's Bath boasts a soaking tub and separate shower with seat and a dual vanity for the ultimate in convenience. Several lower level floor plans are available depending on community.

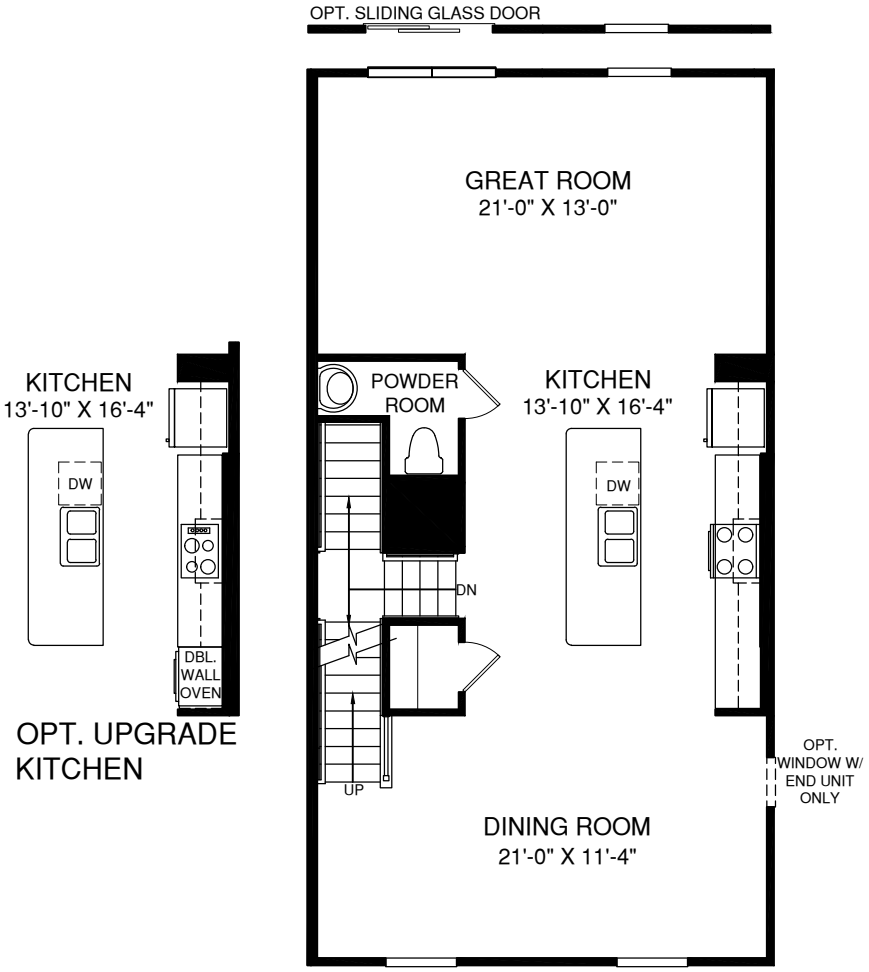


NEIGHBORHOOD ARCHITECTURE

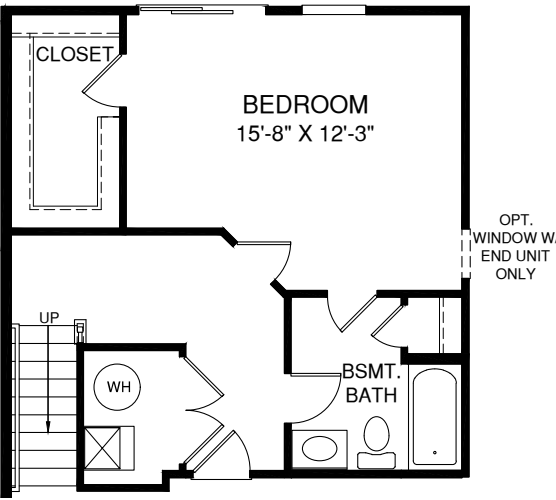
SCHUBERT FRONT ENTRY FLOORPLAN



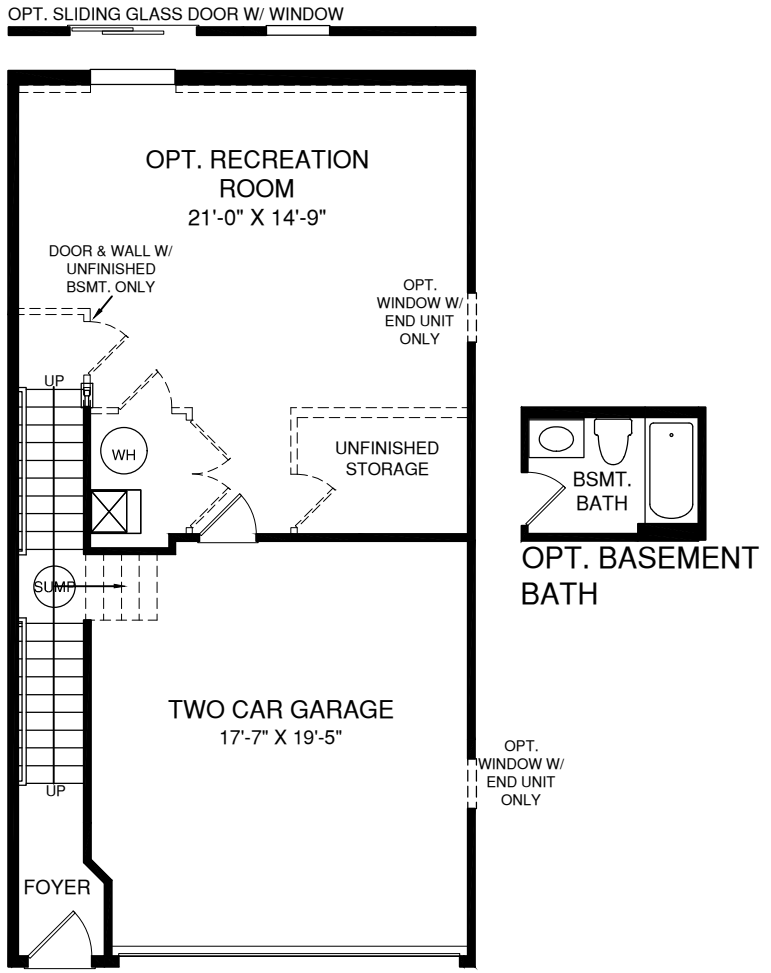
Upper Level



Main Level



Opt. Basement Bedroom

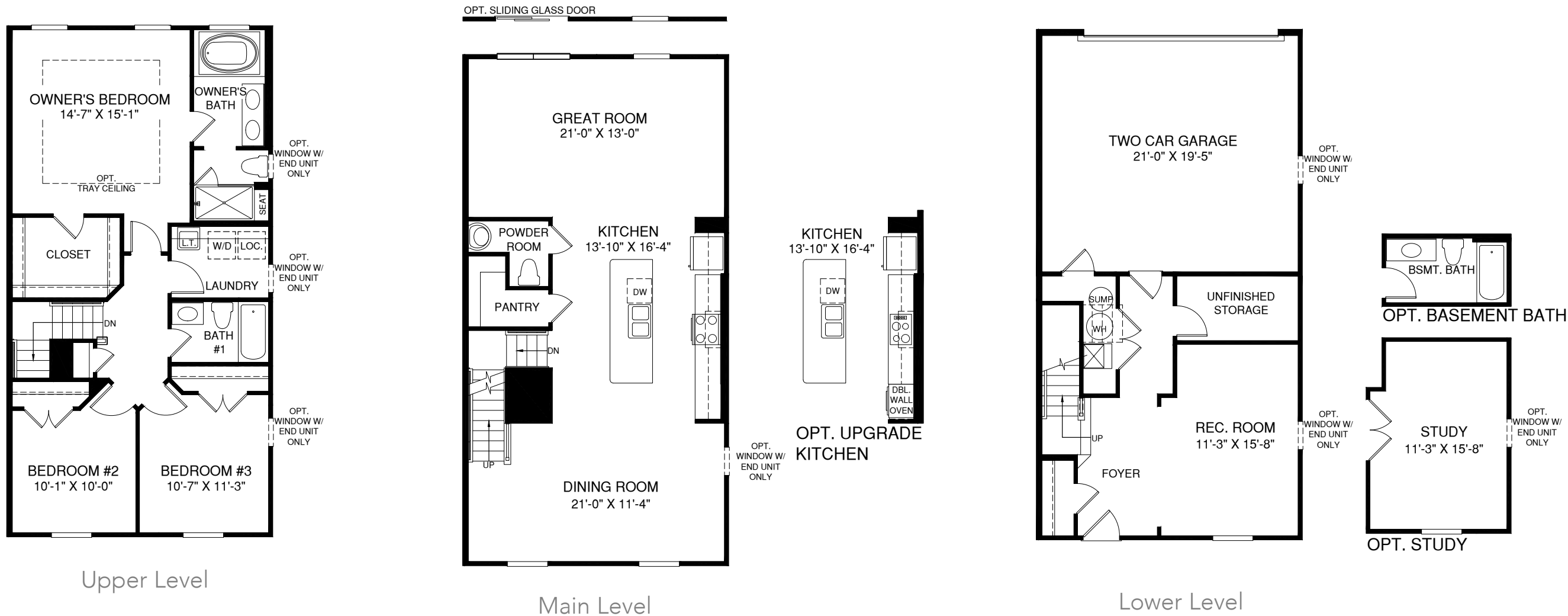


Lower Level



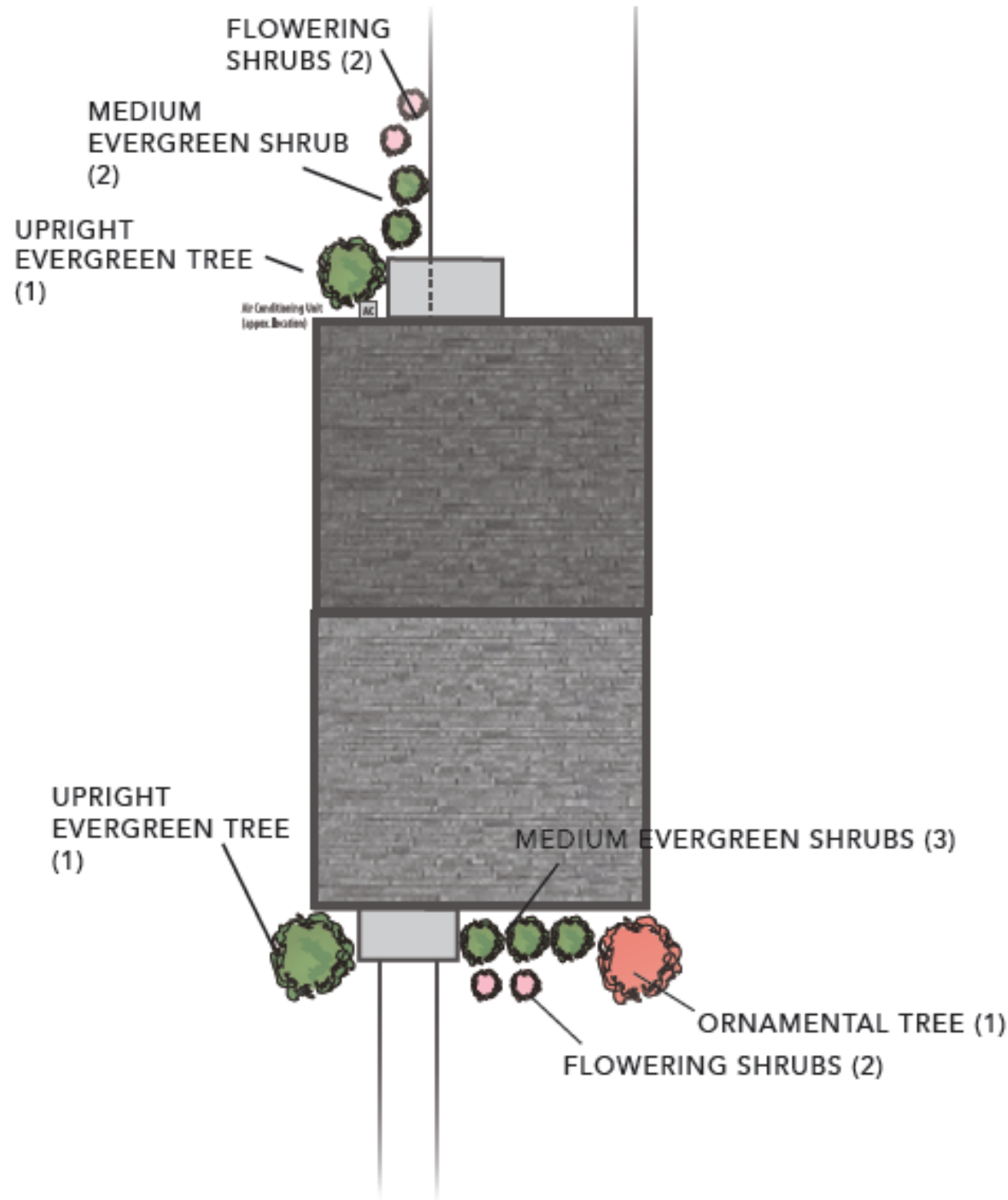
NEIGHBORHOOD ARCHITECTURE

SCHUBERT REAR ENTRY FLOORPLAN



NEIGHBORHOOD ARCHITECTURE

LANDSCAPING PLAN - REAR ENTRY/ALLEY CENTER UNIT

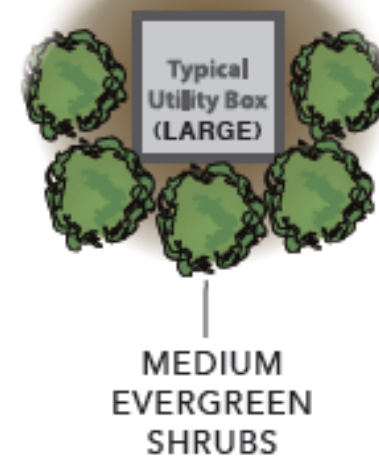


- EVERGREEN SHRUBS (MEDIUM/SMALL) - 24"**
- Boxwood var.
 - Japanese Euonymus
 - Manhattan Euonymus
 - Japanese Holly var.
 - Chinese Holly
 - Compact Inkberry
 - China Girl Holly
 - Blue Holly
 - Juniper var.
 - Otto Luyken Laurel
 - Skip Laurel
 - Dense Yew
 - Hicks Yew

- FLOWERING SHRUBS - 24"**
- Viburnum var.
 - Azaleas var.
 - Hydrangea var.
 - Rose var.
 - Spirea var.
- UPRIGHT EVERGREEN 4' - 5'**
- Juniper var.
 - Hicks Yew
 - Capitata Yew
 - Arborvitae var.

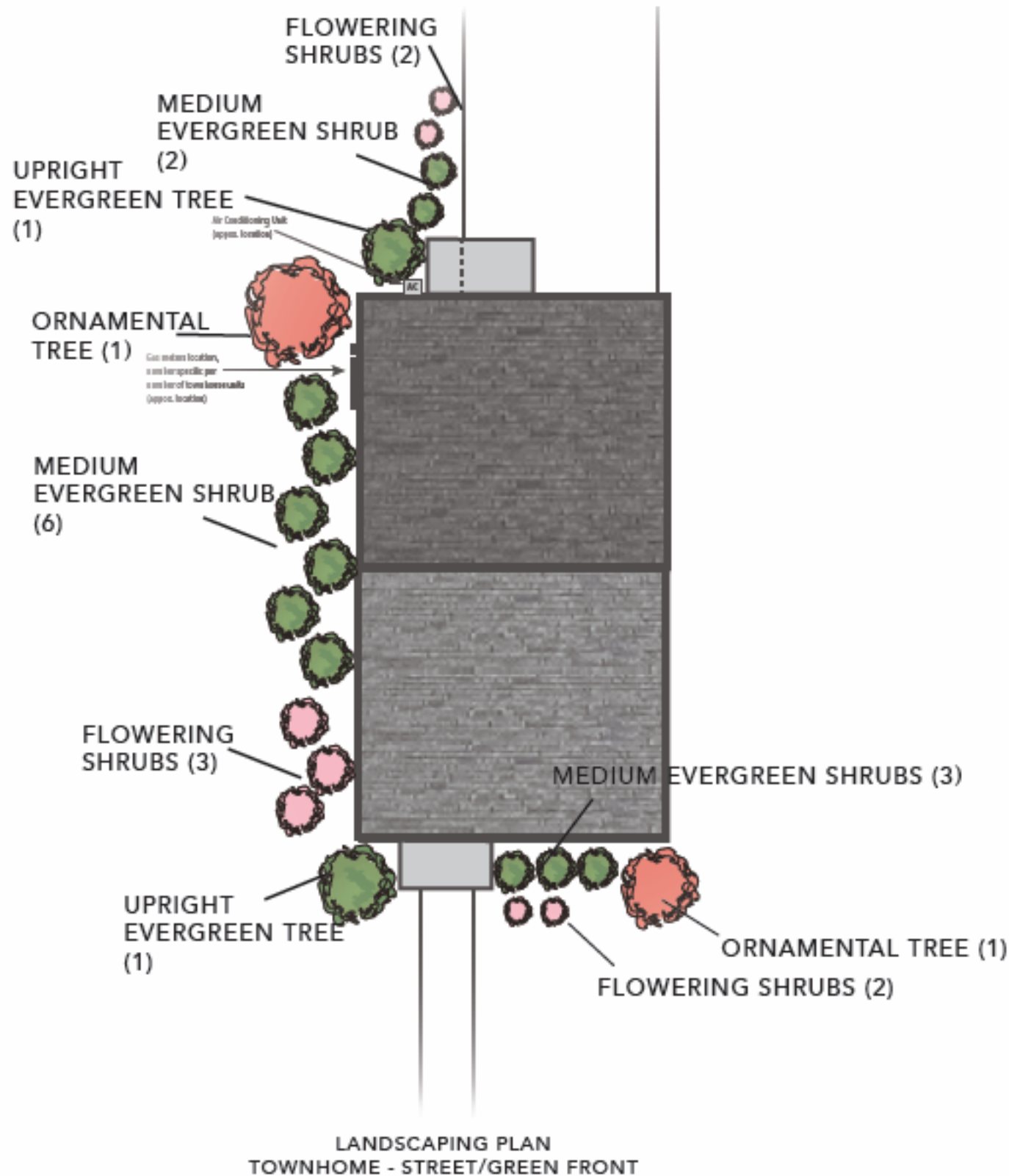
- ORNAMENTAL TREES 1.5 - 2" CAL**
- Serviceberry
 - Riverbirch (bark interest)
 - Eastern Redbud
 - Flowering Dogwood
 - Kousa Dogwood
 - Crapemyrtle
 - Star Magnolia
 - Saucer Magnolia
 - Sweetbay Magnolia
 - Flowering Plum
 - Flowering Cherry var.
 - Flowering Pear var.

Weather, sun exposure & seasonal availability will dictate selections of landscaping materials.



LANDSCAPING PLAN
TOWNHOME - STREET/GREEN FRONT

LANDSCAPING PLAN - END UNIT REAR ENTRY

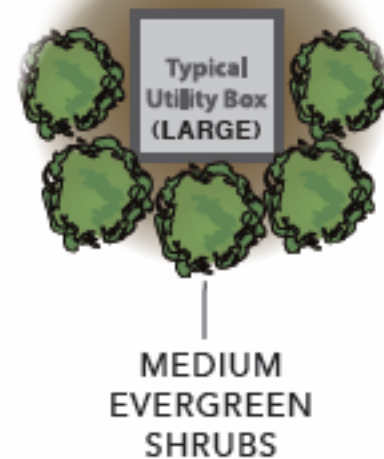


- EVERGREEN SHRUBS (MEDIUM/SMALL) - 24"**
- Boxwood var.
 - Japanese Euonymus
 - Manhattan Euonymus
 - Japanese Holly var.
 - Chinese Holly
 - Compact Inkberry
 - China Girl Holly
 - Blue Holly
 - Juniper var.
 - Juniper var.
 - Otto Luyken Laurel
 - Skip Laurel
 - Dense Yew
 - Hicks Yew

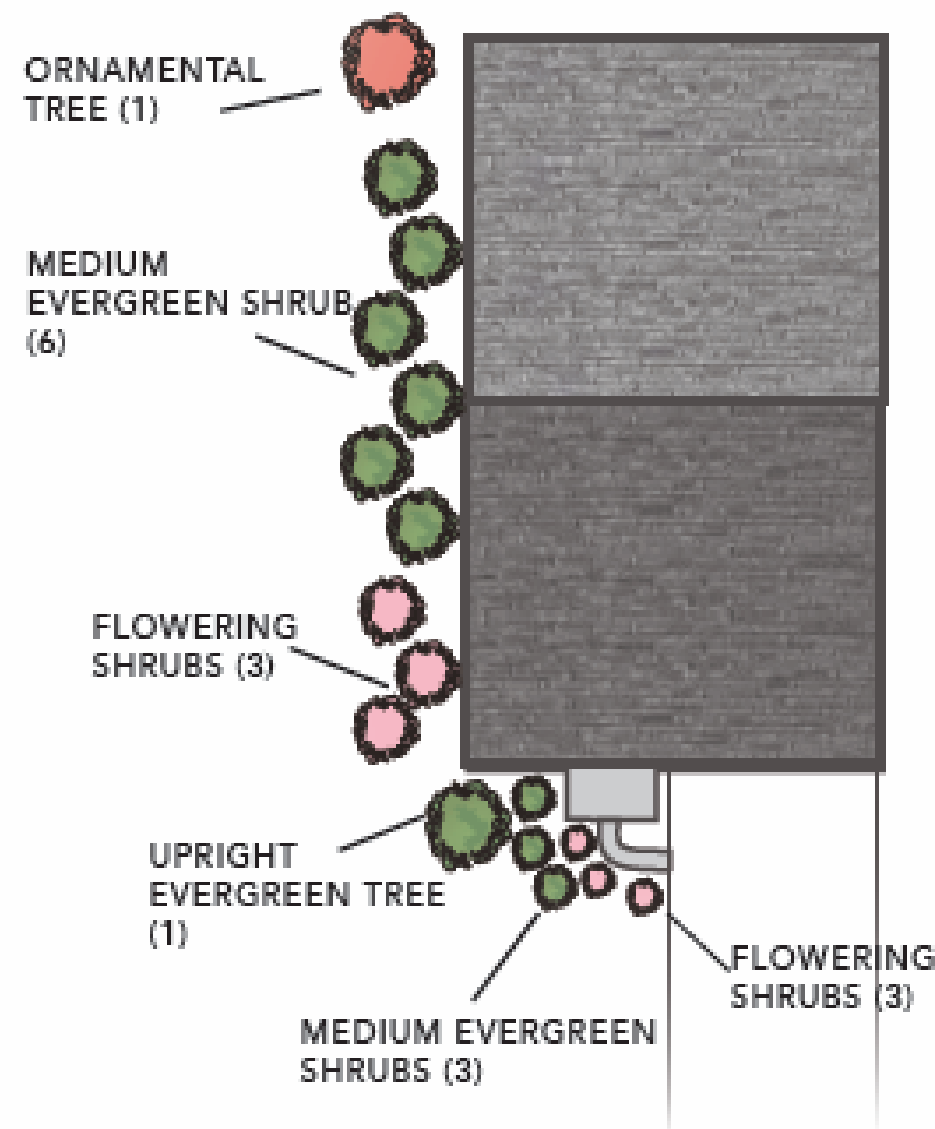
- FLOWERING SHRUBS - 24"**
- Viburnum var.
 - Azaleas var.
 - Hydrangea var.
 - Rose var.
 - Spirea var.
- UPRIGHT EVERGREEN 4' - 5'**
- Juniper var.
 - Hicks Yew
 - Capitata Yew
 - Arborvitae var.

- ORNAMENTAL TREES 1.5 - 2" CAL**
- Serviceberry
 - Riverbirch (bark interest)
 - Eastern Redbud
 - Flowering Dogwood
 - Kousa Dogwood
 - Crapemyrtle
 - Star Magnolia
 - Saucer Magnolia
 - Sweetbay Magnolia
 - Flowering Plum
 - Flowering Cherry var.
 - Flowering Pear var.

Weather, sun exposure & seasonal availability will dictate selections of landscaping materials.



LANDSCAPING PLAN - END UNIT FRONT ENTRY



LANDSCAPING PLAN
TOWNHOME - STREET/GREEN FRONT

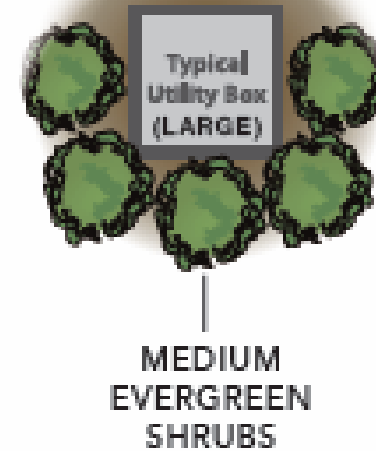
EVERGREEN SHRUBS (MEDIUM/SMALL) - 24"
 Boxwood var.
 Japanese Euonymus
 Manhattan Euonymus
 Japanese Holly var.
 Chinese Holly
 Compact Inkberry
 China Girl Holly
 Blue Holly
 Juniper var.
 Otto Luyken Laurel
 Skip Laurel
 Dense Yew
 Hicks Yew

FLOWERING SHRUBS - 24"
 Viburnum var.
 Azaleas var.
 Hydrangea var.
 Rose var.
 Spirea var.

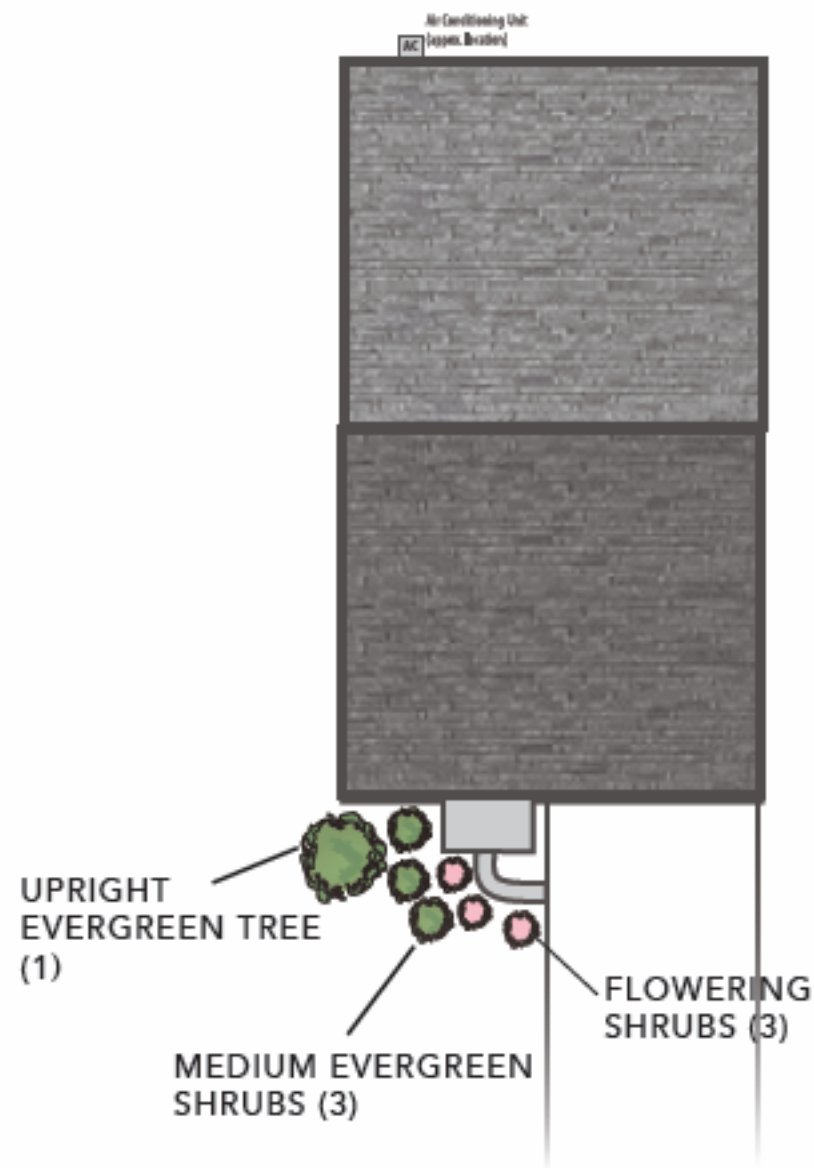
**UPRIGHT EVERGREEN
4' - 5'**
 Juniper var.
 Hicks Yew
 Capitata Yew
 Arborvitae var.

**ORNAMENTAL TREES
1.5 - 2" CAL**
 Serviceberry
 Riverbirch (bark interest)
 Eastern Redbud
 Flowering Dogwood
 Kousa Dogwood
 Crapemyrtle
 Star Magnolia
 Saucer Magnolia
 Sweetbay Magnolia
 Flowering Plum
 Flowering Cherry var.
 Flowering Pear var.

Weather, sun exposure & seasonal availability will dictate selections of landscaping materials.



LANDSCAPING PLAN - FRONT ENTRY CENTER UNIT



LANDSCAPING PLAN
TOWNHOME - STREET/GREEN FRONT

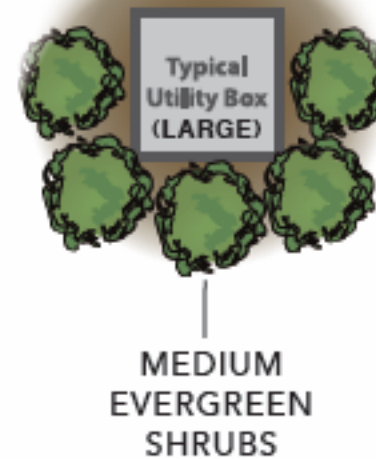
EVERGREEN SHRUBS (MEDIUM/SMALL) - 24"
 Boxwood var.
 Japanese Euonymus
 Manhattan Euonymus
 Japanese Holly var.
 Chinese Holly
 Compact Inkberry
 China Girl Holly
 Blue Holly
 Juniper var.
 Otto Luyken Laurel
 Skip Laurel
 Dense Yew
 Hicks Yew

FLOWERING SHRUBS - 24"
 Viburnum var.
 Azaleas var.
 Hydrangea var.
 Rose var.
 Spirea var.

UPRIGHT EVERGREEN 4' - 5'
 Juniper var.
 Hicks Yew
 Capitata Yew
 Arborvitae var.

ORNAMENTAL TREES 1.5 - 2" CAL
 Serviceberry
 Riverbirch (bark interest)
 Eastern Redbud
 Flowering Dogwood
 Kousa Dogwood
 Crape myrtle
 Star Magnolia
 Saucer Magnolia
 Sweetbay Magnolia
 Flowering Plum
 Flowering Cherry var.
 Flowering Pear var.

Weather, sun exposure & seasonal availability will dictate selections of landscaping materials.



STREETSCAPES



STREETSCAPE

STREETSCAPES



STREETSCAPE

STREETSCAPES



STREETSCAPE

STREETSCAPES



STREETSCAPE

STREETSCAPES



STREETSCAPE

STREETSCAPES



STREETSCAPE

STREETSCAPES



STREETSCAPE

STREETSCAPES



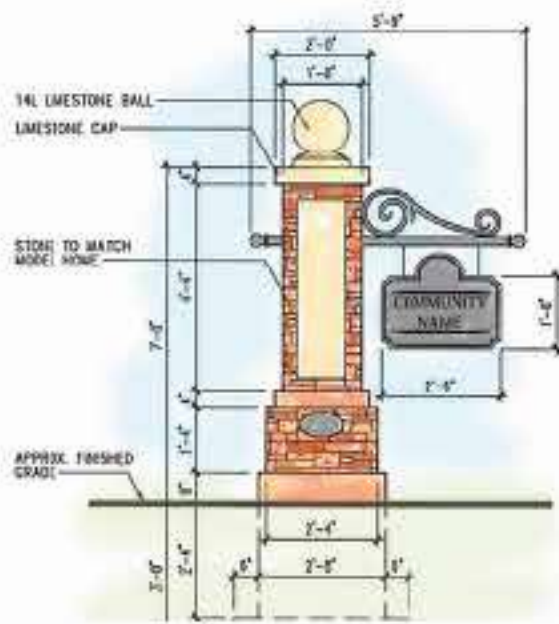
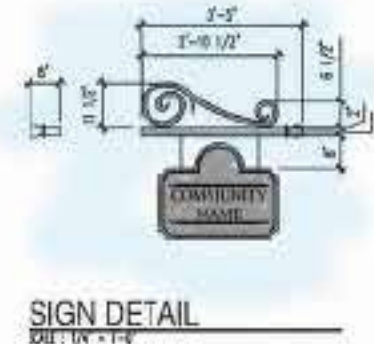
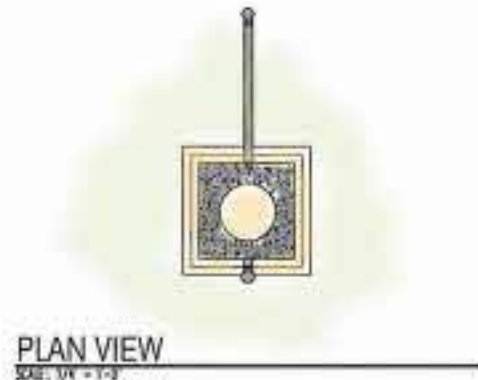
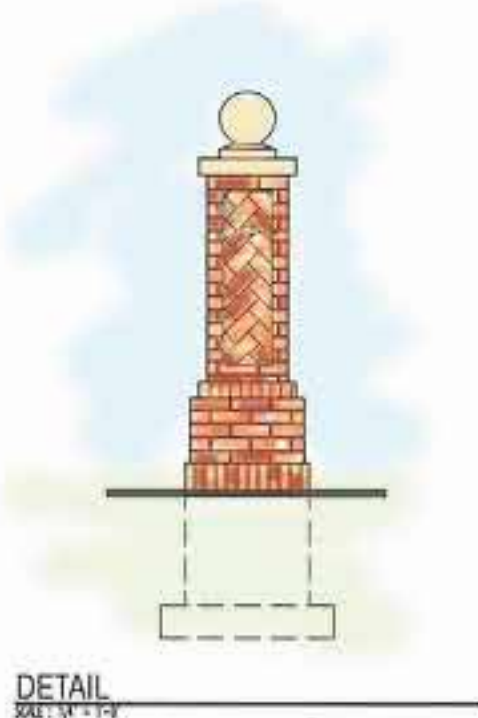
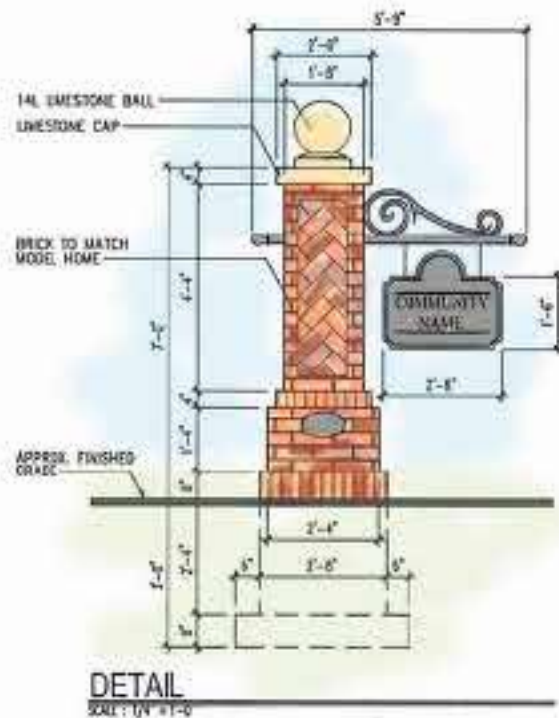
STREETSCAPE

STREETSCAPES

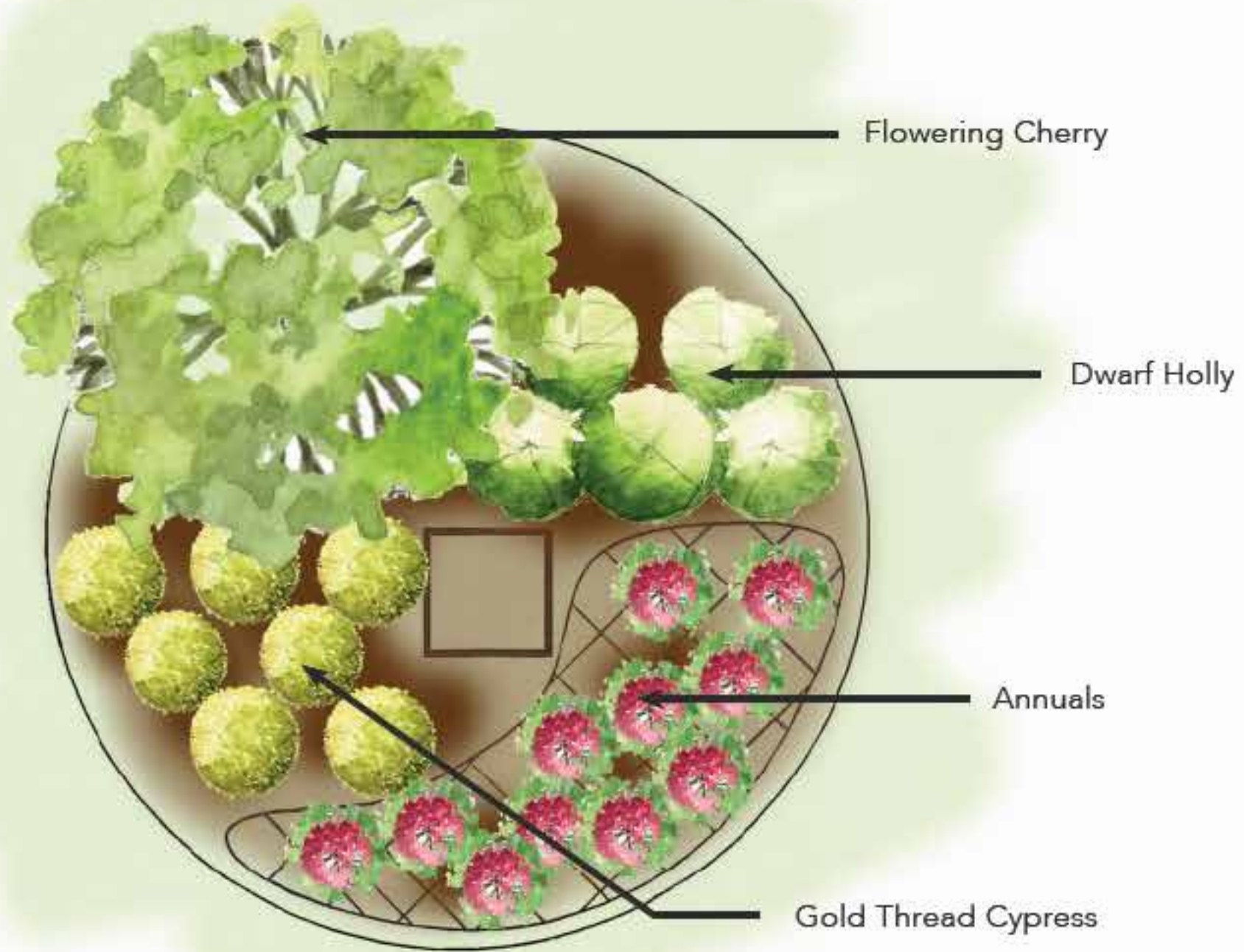


STREETSCAPE

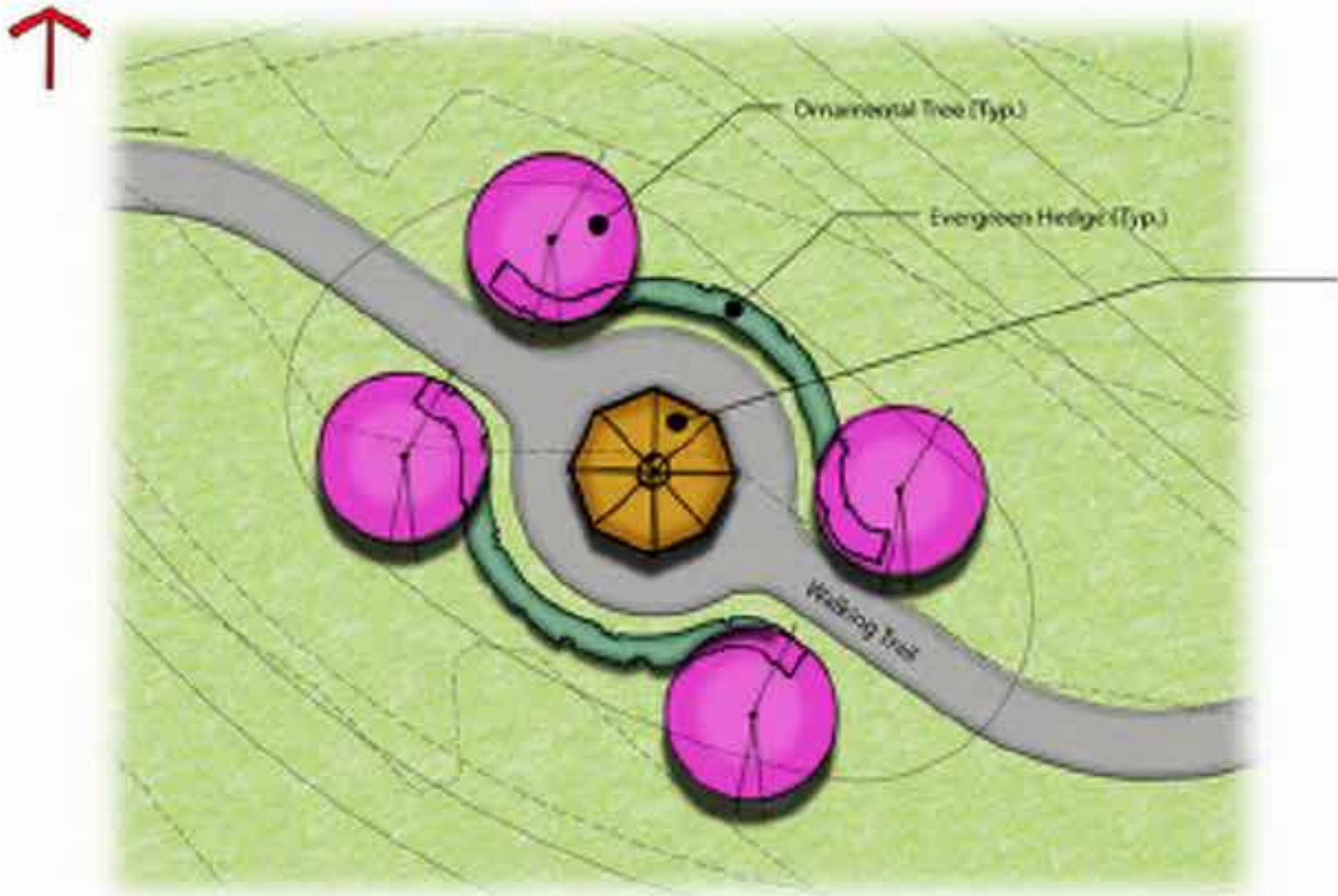
ENTRY MONUMENT



ENTRY MONUMENT LANDSCAPING



BRECKENRIDGE GAZEBO



Gazebo at Wet Pond
Scale: 1" = 12'

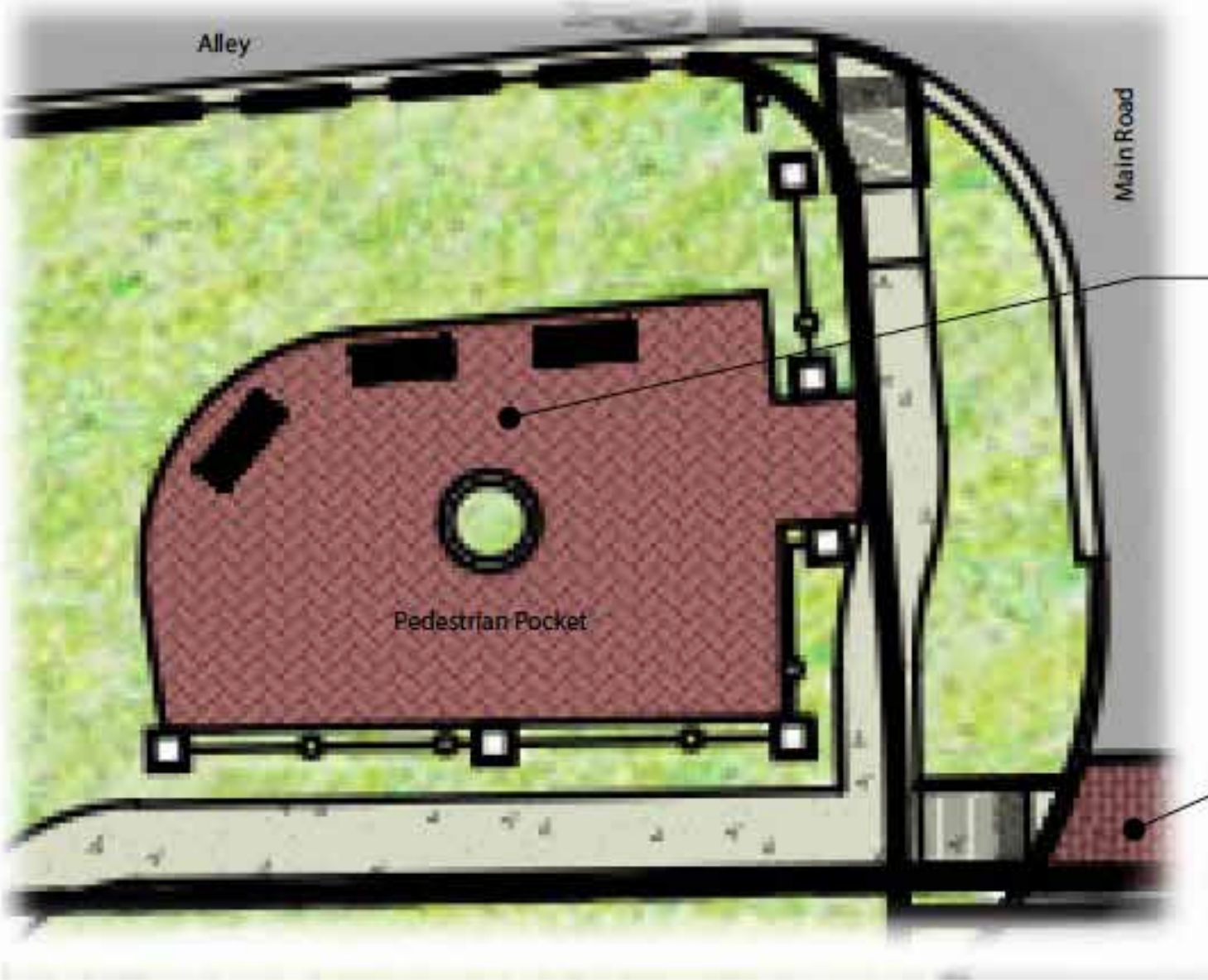
NEIGHBORHOOD ENHANCEMENTS

Trellis



Trellis at Rain Garden
Scale: Not to Scale

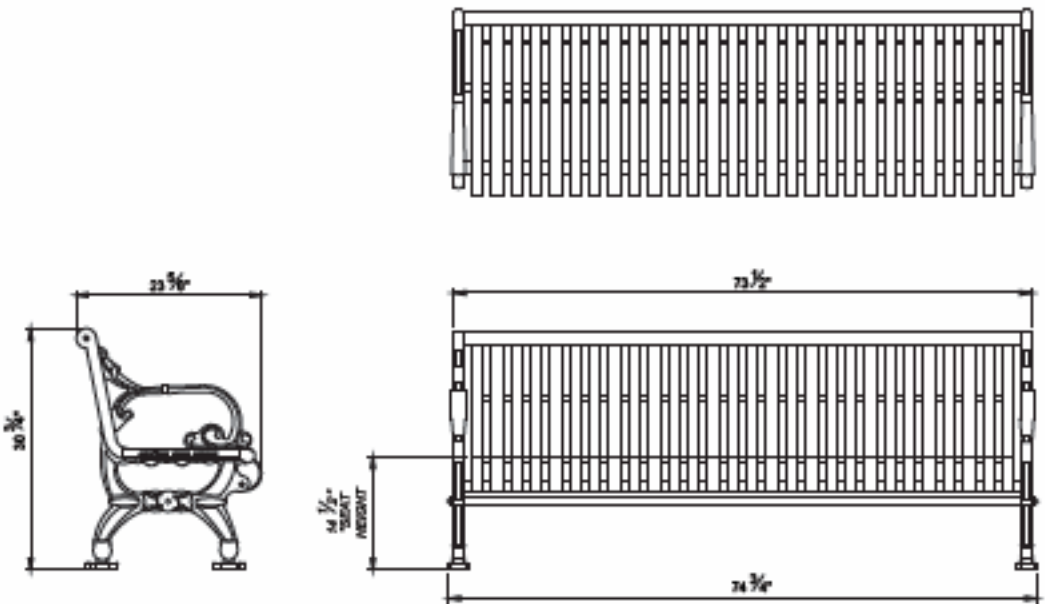
Pedestrian Pocket



Pedestrian Pocket at Entrance
Scale: Not to Scale

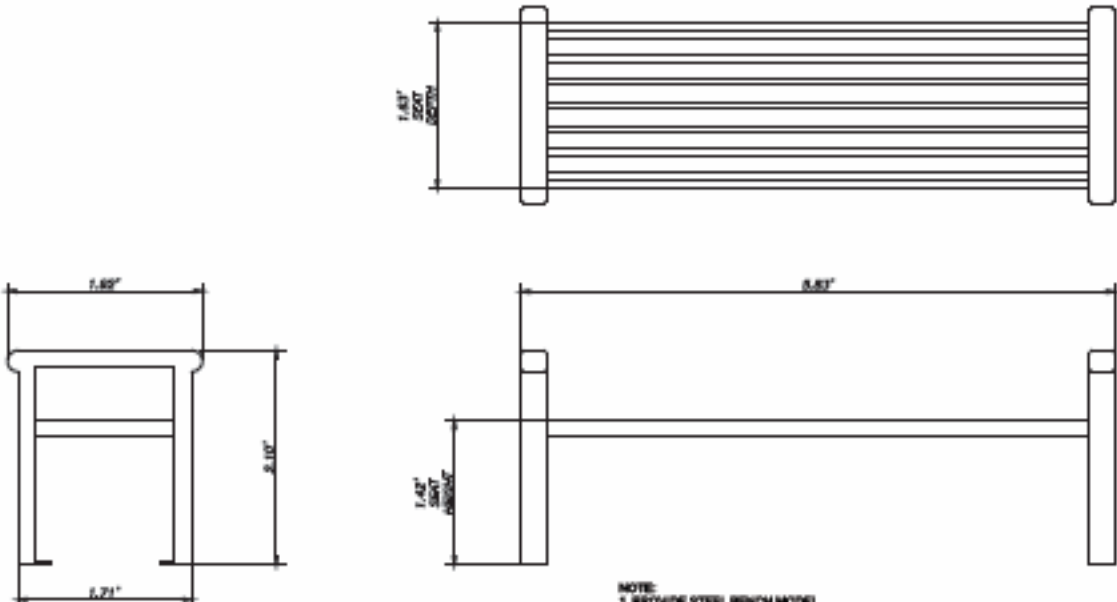
NEIGHBORHOOD ENHANCEMENTS

Benches & Waste Receptacles



NOTE:
 1. PROVIDE STEEL BENCH MODEL # L-28 LAMPUGHTER 6'-0" BENCH MANUFACTURED BY KEYSTONE RIDGE DESIGNS, BUTLER PA; PHONE: 800-284-8208 OR ACCEPTED EQUAL.
 2. FINISH: RAL-3065

STREET BENCH



NOTE:
 1. PROVIDE STEEL BENCH MODEL #R116 READING FLAT BENCH 6'-0" MANUFACTURED BY KEYSTONE RIDGE DESIGNS, BUTLER PA; PHONE: 800-284-8208 OR ACCEPTED EQUAL.
 2. FINISH: RAL-3065

PARK BENCH

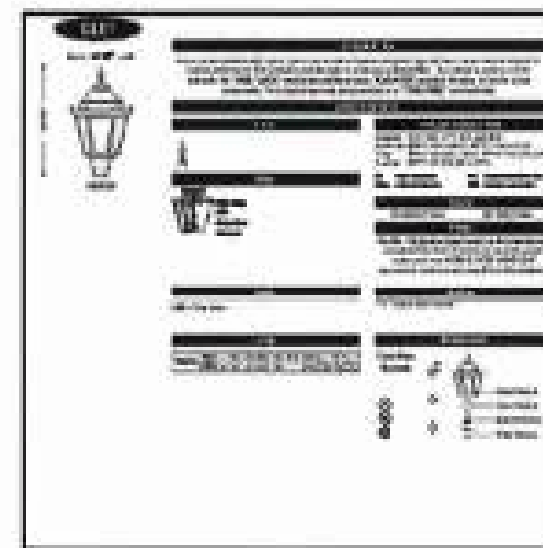
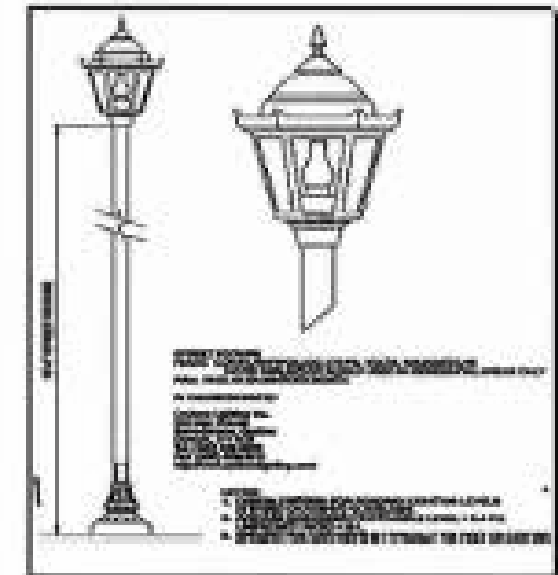
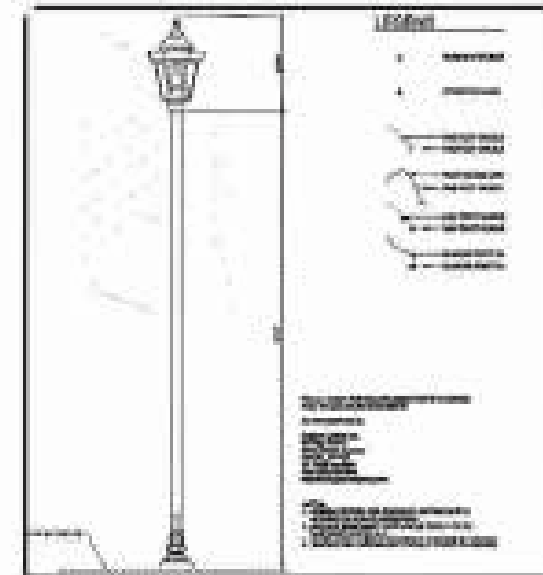


NEIGHBORHOOD ENHANCEMENTS

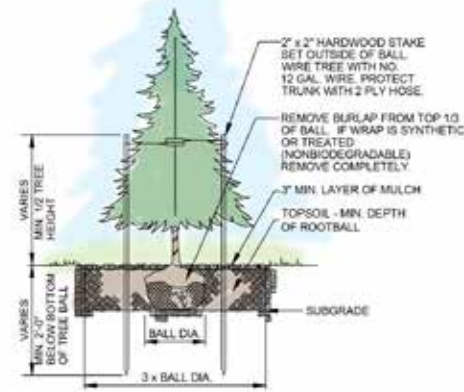
BRECKENRIDGE SIDEWALKS



BRECKENRIDGE LIGHTING

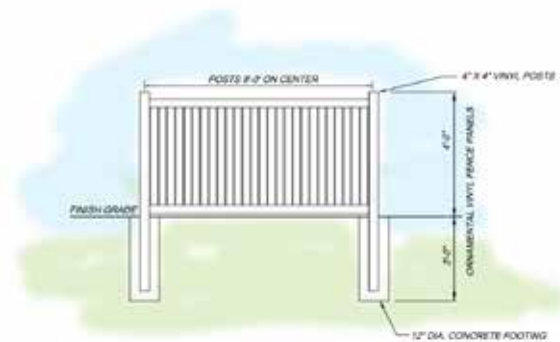


FENCE & LANDSCAPING FEATURES



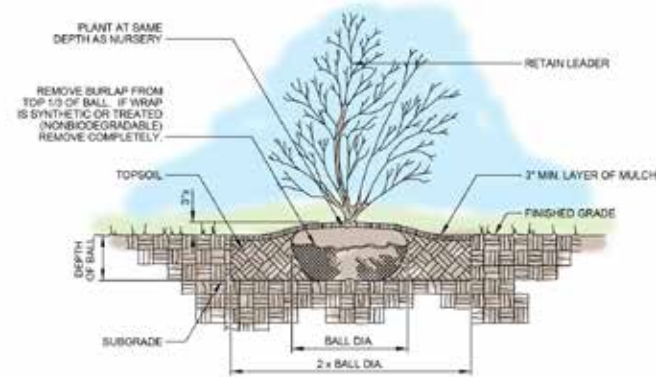
NOTE: ALL EVERGREEN TREES TO BE 6\"/>

EVERGREEN TREE PLANTING

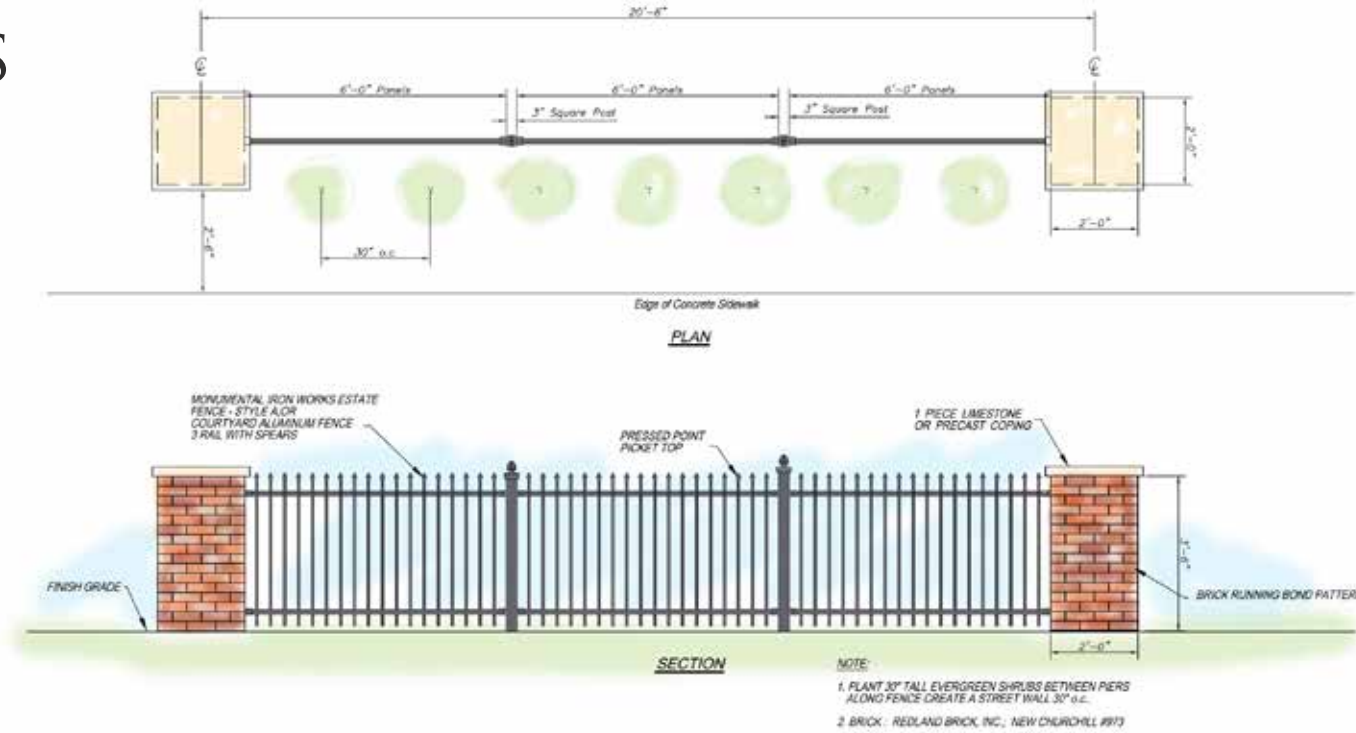


NOTE:
1. PROVIDE BUFTTECH SEMI-PERMANENT ORNAMENTAL VINYL FENCE SYSTEM COLOR WHITE. MANUFACTURED BY: CERTAINTED OUTDOOR PRODUCTS 231 SHIP CANAL PARKWAY, BUFFALO, NY 14218 PHONE: 716-823-3223

4' TALL VINYL FENCE

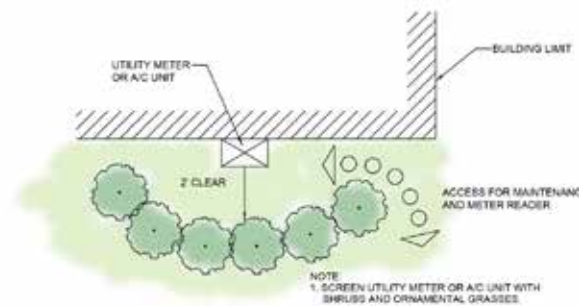


SHRUB PLANTING

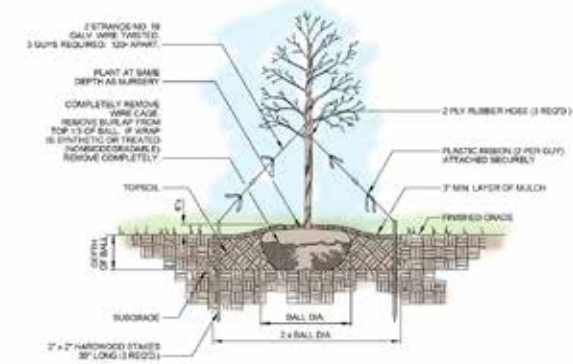


STREET WALL (FENCE AND BRICK PIERS)

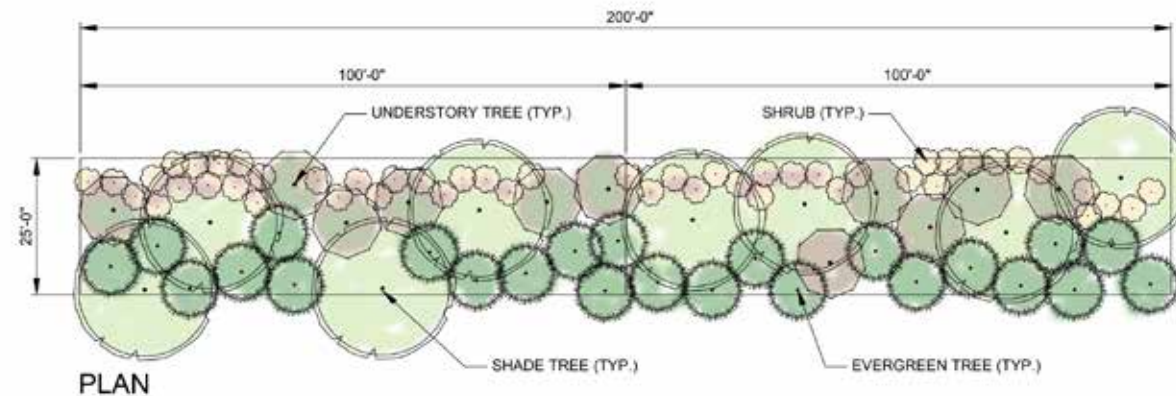
Scale: 1\"/>



TYPICAL UTILITY SCREENING



DECIDUOUS TREE PLANTING



PLAN



TOWNHOME COLOR SCHEMES

ROW LABELS	STONE PROFILE	HARDIE PRIMARY	HARDIE ACCENT	SHUTTERS	TRIM	COMPLEMENTARY DOOR	BRIGHT DOOR
Vibrant Brown TH-01	Ledgestone	Evening Blue	Evening Blue	Pebblestone Clay	Almond	Tavern Taupe - SW7508	Tavern Taupe - SW7508
Vibrant Brown TH-02	Ledgestone	Autumn Tan	Autumn Tan	Terra Brown	Almond	French Roast - SW6069	French Roast - SW6069
Vibrant Brown TH-03	Ledgestone	Mountain Sage	Mountain Sage	Pebblestone Clay	Almond	Tavern Taupe - SW7508	Tavern Taupe - SW7508
Vibrant Brown TH-04	Ledgestone	Monterey Taupe	Monterey Taupe	Blue	Almond	Outerspace - SW6251	Outerspace - SW6251
Vibrant Brown TH-05	Ledgestone	Countrylane Red	Countrylane Red	Brown	Almond	Black Fox - SW7020	Black Fox - SW7020
Vibrant Brown TH-06	Ledgestone	Sandstone Beige	Sandstone Beige	Blue	Almond	Outerspace - SW6251	Outerspace - SW6251
Vibrant Brown TH-07	Ledgestone	Heathered Moss	Heathered Moss	Terra Brown	Almond	French Roast - SW6069	French Roast - SW6069
Vibrant Brown TH-08	Ledgestone	Evening Blue	Evening Blue	Pebblestone Clay	Almond	Tavern Taupe - SW7508	Tavern Taupe - SW7508
Vibrant Brown TH-09	Ledgestone	Autumn Tan	Autumn Tan	Spanish Moss	Almond	Roycroft Bronze Green - SW2846	Roycroft Bronze Green - SW2846
Vibrant Brown TH-10	Ledgestone	Countrylane Red	Countrylane Red	Pebblestone Clay	Almond	Tavern Taupe - SW7508	Tavern Taupe - SW7508
Vibrant Brown TH-11	Ledgestone	Mountain Sage	Mountain Sage	Spanish Moss	Almond	Roycroft Bronze Green - SW2846	Roycroft Bronze Green - SW2846
Vibrant Brown TH-12	Ledgestone	Sandstone Beige	Sandstone Beige	Terra Brown	Almond	French Roast - SW6069	French Roast - SW6069
Vibrant Brown TH-13	Ledgestone	Evening Blue	Evening Blue	Blue	Almond	Outerspace - SW6251	Outerspace - SW6251
Vibrant Brown TH-14	Ledgestone	Monterey Taupe	Monterey Taupe	Terra Brown	Almond	French Roast - SW6069	French Roast - SW6069
Vibrant Brown TH-15	Ledgestone	Countrylane Red	Countrylane Red	Brown	Almond	Black Fox - SW7020	Black Fox - SW7020
Vibrant Brown TH-16	Ledgestone	Mountain Sage	Mountain Sage	Pebblestone Clay	Almond	Tavern Taupe - SW7508	Tavern Taupe - SW7508
Vibrant Brown TH-17	Ledgestone	Autumn Tan	Autumn Tan	Spanish Moss	Almond	Roycroft Bronze Green - SW2846	Roycroft Bronze Green - SW2846
Vibrant Brown TH-18	Ledgestone	Sandstone Beige	Sandstone Beige	Terra Brown	Almond	French Roast - SW6069	French Roast - SW6069
Vibrant Brown TH-19	Ledgestone	Heathered Moss	Mountain Sage	Spanish Moss	Almond	Roycroft Bronze Green - SW2846	Roycroft Bronze Green - SW2846
Vibrant Brown TH-20	Ledgestone	Monterey Taupe	Monterey Taupe	Blue	Almond	Outerspace - SW6251	Outerspace - SW6251
Vibrant Brown TH-21	Ledgestone	Countrylane Red	Countrylane Red	Brown	Almond	Black Fox - SW7020	Black Fox - SW7020
Vibrant Brown TH-22	Ledgestone	Autumn Tan	Autumn Tan	Blue	Almond	Outerspace - SW6251	Outerspace - SW6251
Vibrant Brown TH-23	Ledgestone	Monterey Taupe	Monterey Taupe	Spanish Moss	Almond	Roycroft Bronze Green - SW2846	Roycroft Bronze Green - SW2846



TOWNHOME COLOR SCHEMES

Lot #	Scheme Code	Meridian Salisbury Brick	Environmental Stone	Primary Siding	Accent Siding	Shutters	Bright Door	Complementary Door	Building Configuration
48	Terra H TH-6	Craggy Mountain	Bucks County	Navajo Beige	Navajo Beige	Spanish Moss	Coconut Husk - SW6111	Roycroft Bronze Green - SW2846	Mid-level entry with rear garage at basement level
49	Terra H TH-7	Walnut Grove	Bucks County	Gray Slate	Gray Slate	Black	Bunglehouse Blue - SW0048	Tricorn Black - SW6258	Mid-level entry with rear garage at basement level
50	Terra H TH-1	Olde Columbia	Bucks County	Timber Bark	Timber Bark	Brown	Rookwood Blue Green - SW2811	Black Fox - SW7020	Mid-level entry with rear garage at basement level
51	Terra H TH-2	Catawba Ridge	Bucks County	Cobble Stone	Cobble Stone	Peppercorn	Aurora Brown - SW2837	Sealskin - SW7675	Mid-level entry with rear garage at basement level
52	Terra H TH-3	Berkshire	Bucks County	Gray Slate	Gray Slate	Black	Rookwood Blue Green - SW2811	Tricorn Black - SW6258	Mid-level entry with rear garage at basement level
53	Terra H TH-4	Walnut Grove	Bucks County	Monterey Taupe	Monterey Taupe	Winestone	Deep Maroon - SW0072	Marooned - SW6020	Mid-level entry with rear garage at basement level
54	Terra H TH-5	LaCava	Bucks County	Iron Gray	Iron Gray	Blackwatch Green	Pewter Green - SW6208	Rookwood Shutter Green - SW2809 Green	Mid-level entry with rear garage at basement level
55	Terra H TH-6	Craggy Mountain	Bucks County	Navajo Beige	Navajo Beige	Spanish Moss	Coconut Husk - SW6111	Roycroft Bronze Green - SW2846	Mid-level entry with rear garage at basement level
56	Terra H TH-7	Walnut Grove	Bucks County	Gray Slate	Gray Slate	Black	Bunglehouse Blue - SW0048	Tricorn Black - SW6258	Mid-level entry with rear garage at basement level
57	Terra H TH-1	Olde Columbia	Bucks County	Timber Bark	Timber Bark	Brown	Rookwood Blue Green - SW2811	Black Fox - SW7020	Mid-level entry with rear garage at basement level
58	Terra H TH-2	Catawba Ridge	Bucks County	Cobble Stone	Cobble Stone	Peppercorn	Aurora Brown - SW2837	Sealskin - SW7675	Mid-level entry with rear garage at basement level
59	Terra H TH-3	Berkshire	Bucks County	Gray Slate	Gray Slate	Black	Rookwood Blue Green - SW2811	Tricorn Black - SW6258	Basement level entry front garage with a rear walkout door
60	Terra H TH-4	Walnut Grove	Bucks County	Monterey Taupe	Monterey Taupe	Winestone	Deep Maroon - SW0072	Marooned - SW6020	Basement level entry front garage with a rear walkout door
61	Terra H TH-5	LaCava	Bucks County	Iron Gray	Iron Gray	Blackwatch Green	Pewter Green - SW6208	Rookwood Shutter Green - SW2809 Green	Basement level entry front garage with a rear walkout door
62	Terra H TH-6	Craggy Mountain	Bucks County	Navajo Beige	Navajo Beige	Spanish Moss	Coconut Husk - SW6111	Roycroft Bronze Green - SW2846	Basement level entry front garage with a rear walkout door
63	Terra H TH-7	Walnut Grove	Bucks County	Gray Slate	Gray Slate	Black	Bunglehouse Blue - SW0048	Tricorn Black - SW6258	Basement level entry front garage with a rear walkout door
64	Terra H TH-1	Olde Columbia	Bucks County	Timber Bark	Timber Bark	Brown	Rookwood Blue Green - SW2811	Black Fox - SW7020	Basement level entry front garage with a rear walkout door
65	Terra H TH-2	Catawba Ridge	Bucks County	Cobble Stone	Cobble Stone	Peppercorn	Aurora Brown - SW2837	Sealskin - SW7675	Basement level entry front garage with a rear walkout door
66	Terra H TH-3	Berkshire	Bucks County	Gray Slate	Gray Slate	Black	Rookwood Blue Green - SW2811	Tricorn Black - SW6258	Basement level entry front garage with a rear walkout door
67	Terra H TH-4	Walnut Grove	Bucks County	Monterey Taupe	Monterey Taupe	Winestone	Deep Maroon - SW0072	Marooned - SW6020	Basement level entry front garage with a rear walkout door
68	Terra H TH-5	LaCava	Bucks County	Iron Gray	Iron Gray	Blackwatch Green	Pewter Green - SW6208	Rookwood Shutter Green - SW2809 Green	Basement level entry front garage with a rear walkout door
69	Terra H TH-6	Craggy Mountain	Bucks County	Navajo Beige	Navajo Beige	Spanish Moss	Coconut Husk - SW6111	Roycroft Bronze Green - SW2846	Basement level entry rear garage
70	Terra H TH-7	Walnut Grove	Bucks County	Gray Slate	Gray Slate	Black	Bunglehouse Blue - SW0048	Tricorn Black - SW6258	Basement level entry rear garage
71	Terra H TH-1	Olde Columbia	Bucks County	Timber Bark	Timber Bark	Brown	Rookwood Blue Green - SW2811	Black Fox - SW7020	Basement level entry rear garage
72	Terra H TH-2	Catawba Ridge	Bucks County	Cobble Stone	Cobble Stone	Peppercorn	Aurora Brown - SW2837	Sealskin - SW7675	Basement level entry rear garage
73	Terra H TH-3	Berkshire	Bucks County	Gray Slate	Gray Slate	Black	Rookwood Blue Green - SW2811	Tricorn Black - SW6258	Basement level entry rear garage
74	Terra H TH-4	Walnut Grove	Bucks County	Monterey Taupe	Monterey Taupe	Winestone	Deep Maroon - SW0072	Marooned - SW6020	Basement level entry rear garage
75	Terra H TH-5	LaCava	Bucks County	Iron Gray	Iron Gray	Blackwatch Green	Pewter Green - SW6208	Rookwood Shutter Green - SW2809 Green	Basement level entry rear garage
76	Terra H TH-6	Craggy Mountain	Bucks County	Navajo Beige	Navajo Beige	Spanish Moss	Coconut Husk - SW6111	Roycroft Bronze Green - SW2846	Basement level entry rear garage
77	Terra H TH-7	Walnut Grove	Bucks County	Gray Slate	Gray Slate	Black	Bunglehouse Blue - SW0048	Tricorn Black - SW6258	Basement level entry rear garage
78	Terra H TH-1	Olde Columbia	Bucks County	Timber Bark	Timber Bark	Brown	Rookwood Blue Green - SW2811	Black Fox - SW7020	Basement level entry rear garage
79	Terra H TH-2	Catawba Ridge	Bucks County	Cobble Stone	Cobble Stone	Peppercorn	Aurora Brown - SW2837	Sealskin - SW7675	Basement level entry rear garage
80	Terra H TH-3	Berkshire	Bucks County	Gray Slate	Gray Slate	Black	Rookwood Blue Green - SW2811	Tricorn Black - SW6258	Basement level entry rear garage
81	Terra H TH-4	Walnut Grove	Bucks County	Monterey Taupe	Monterey Taupe	Winestone	Deep Maroon - SW0072	Marooned - SW6020	Basement level entry front garage with a rear walkout door
82	Terra H TH-5	LaCava	Bucks County	Iron Gray	Iron Gray	Blackwatch Green	Pewter Green - SW6208	Rookwood Shutter Green - SW2809 Green	Basement level entry front garage with a rear walkout door
83	Terra H TH-6	Craggy Mountain	Bucks County	Navajo Beige	Navajo Beige	Spanish Moss	Coconut Husk - SW6111	Roycroft Bronze Green - SW2846	Basement level entry front garage with a rear walkout door
84	Terra H TH-7	Walnut Grove	Bucks County	Gray Slate	Gray Slate	Black	Bunglehouse Blue - SW0048	Tricorn Black - SW6258	Basement level entry front garage with a rear walkout door
85	Terra H TH-1	Olde Columbia	Bucks County	Timber Bark	Timber Bark	Brown	Rookwood Blue Green - SW2811	Black Fox - SW7020	Basement level entry front garage with a rear walkout door
86	Terra H TH-2	Catawba Ridge	Bucks County	Cobble Stone	Cobble Stone	Peppercorn	Aurora Brown - SW2837	Sealskin - SW7675	Basement level entry front garage with a rear walkout door
87	Terra H TH-3	Berkshire	Bucks County	Gray Slate	Gray Slate	Black	Rookwood Blue Green - SW2811	Tricorn Black - SW6258	Basement level entry front garage with a rear walkout door
88	Terra H TH-4	Walnut Grove	Bucks County	Monterey Taupe	Monterey Taupe	Winestone	Deep Maroon - SW0072	Marooned - SW6020	Basement level entry front garage with a rear walkout door
89	Terra H TH-5	LaCava	Bucks County	Iron Gray	Iron Gray	Blackwatch Green	Pewter Green - SW6208	Rookwood Shutter Green - SW2809 Green	Basement level entry front garage with a rear walkout door
90	Terra H TH-6	Craggy Mountain	Bucks County	Navajo Beige	Navajo Beige	Spanish Moss	Coconut Husk - SW6111	Roycroft Bronze Green - SW2846	Basement level entry front garage with a rear walkout door
91	Terra H TH-7	Walnut Grove	Bucks County	Gray Slate	Gray Slate	Black	Bunglehouse Blue - SW0048	Tricorn Black - SW6258	Basement level entry front garage with a rear walkout door
92	Terra H TH-1	Olde Columbia	Bucks County	Timber Bark	Timber Bark	Brown	Rookwood Blue Green - SW2811	Black Fox - SW7020	Basement level entry front garage with a rear walkout door
93	Terra H TH-2	Catawba Ridge	Bucks County	Cobble Stone	Cobble Stone	Peppercorn	Aurora Brown - SW2837	Sealskin - SW7675	Basement level entry front garage with a rear walkout door



TOWNHOME COLOR SCHEMES

Lot #	Scheme Code	Meridian Salisbury Brick	Environmental Stone	Primary Siding	Accent Siding	Shutters	Bright Door	Complementary Door	Building Configuration
94	Terra H TH-3	Berkshire	Bucks County	Gray Slate	Gray Slate	Black	Rookwood Blue Green - SW2811	Tricorn Black - SW6258	Basement level entry front garage with a rear egress window
95	Terra H TH-4	Walnut Grove	Bucks County	Monterey Taupe	Monterey Taupe	Winestone	Deep Maroon - SW0072	Marooned - SW6020	Basement level entry front garage with a rear egress window
96	Terra H TH-5	LaCava	Bucks County	Iron Gray	Iron Gray	Blackwatch Green	Pewter Green - SW6208	Rookwood Shutter Green - SW2809 Green	Basement level entry front garage with a rear egress window
97	Terra H TH-6	Craggy Mountain	Bucks County	Navajo Beige	Navajo Beige	Spanish Moss	Coconut Husk - SW6111	Roycroft Bronze Green - SW2846	Basement level entry front garage with a rear egress window
98	Terra H TH-7	Walnut Grove	Bucks County	Gray Slate	Gray Slate	Black	Bunglehouse Blue - SW0048	Tricorn Black - SW6258	Basement level entry front garage with a rear egress window
99	Terra H TH-1	Olde Columbia	Bucks County	Timber Bark	Timber Bark	Brown	Rookwood Blue Green - SW2811	Black Fox - SW7020	Basement level entry front garage with a rear egress window
100	Terra H TH-2	Catawba Ridge	Bucks County	Cobble Stone	Cobble Stone	Peppercorn	Aurora Brown - SW2837	Sealskin - SW7675	Basement level entry front garage with a rear egress window
101	Terra H TH-3	Berkshire	Bucks County	Gray Slate	Gray Slate	Black	Rookwood Blue Green - SW2811	Tricorn Black - SW6258	Basement level entry front garage with a rear egress window
102	Terra H TH-4	Walnut Grove	Bucks County	Monterey Taupe	Monterey Taupe	Winestone	Deep Maroon - SW0072	Marooned - SW6020	Basement level entry front garage with a rear egress window
103	Terra H TH-5	LaCava	Bucks County	Iron Gray	Iron Gray	Blackwatch Green	Pewter Green - SW6208	Rookwood Shutter Green - SW2809 Green	Basement level entry front garage with a rear egress window
104	Terra H TH-6	Craggy Mountain	Bucks County	Navajo Beige	Navajo Beige	Spanish Moss	Coconut Husk - SW6111	Roycroft Bronze Green - SW2846	Basement level entry front garage with a rear egress window
105	Terra H TH-7	Walnut Grove	Bucks County	Gray Slate	Gray Slate	Black	Bunglehouse Blue - SW0048	Tricorn Black - SW6258	Basement level entry front garage with a rear egress window
106	Terra H TH-1	Olde Columbia	Bucks County	Timber Bark	Timber Bark	Brown	Rookwood Blue Green - SW2811	Black Fox - SW7020	Basement level entry front garage with a rear egress window
107	Terra H TH-2	Catawba Ridge	Bucks County	Cobble Stone	Cobble Stone	Peppercorn	Aurora Brown - SW2837	Sealskin - SW7675	Basement level entry front garage with a rear egress window
108	Terra H TH-3	Berkshire	Bucks County	Gray Slate	Gray Slate	Black	Rookwood Blue Green - SW2811	Tricorn Black - SW6258	Basement level entry front garage with a rear egress window
109	Terra H TH-4	Walnut Grove	Bucks County	Monterey Taupe	Monterey Taupe	Winestone	Deep Maroon - SW0072	Marooned - SW6020	Basement level entry front garage with a rear egress window
110	Terra H TH-5	LaCava	Bucks County	Iron Gray	Iron Gray	Blackwatch Green	Pewter Green - SW6208	Rookwood Shutter Green - SW2809 Green	Basement level entry front garage with a rear egress window
111	Terra H TH-6	Craggy Mountain	Bucks County	Navajo Beige	Navajo Beige	Spanish Moss	Coconut Husk - SW6111	Roycroft Bronze Green - SW2846	Basement level entry front garage with a rear egress window
112	Terra H TH-7	Walnut Grove	Bucks County	Gray Slate	Gray Slate	Black	Bunglehouse Blue - SW0048	Tricorn Black - SW6258	Basement level entry front garage with a rear egress window

