

INFLOW AND INFILTRATION MANAGEMENT

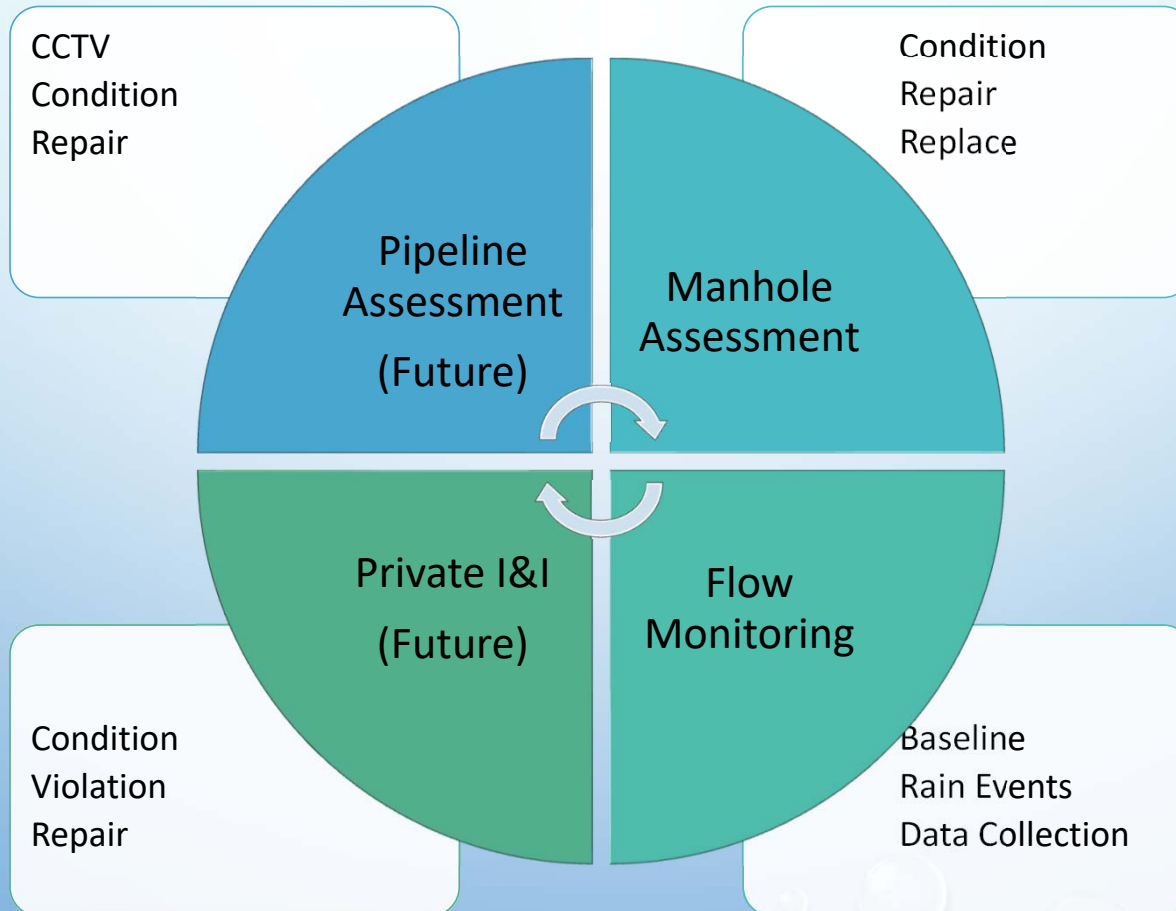


MANHOLE ASSESSMENT FLOW MONITORING AND FUTURE I&I PROGRAMS

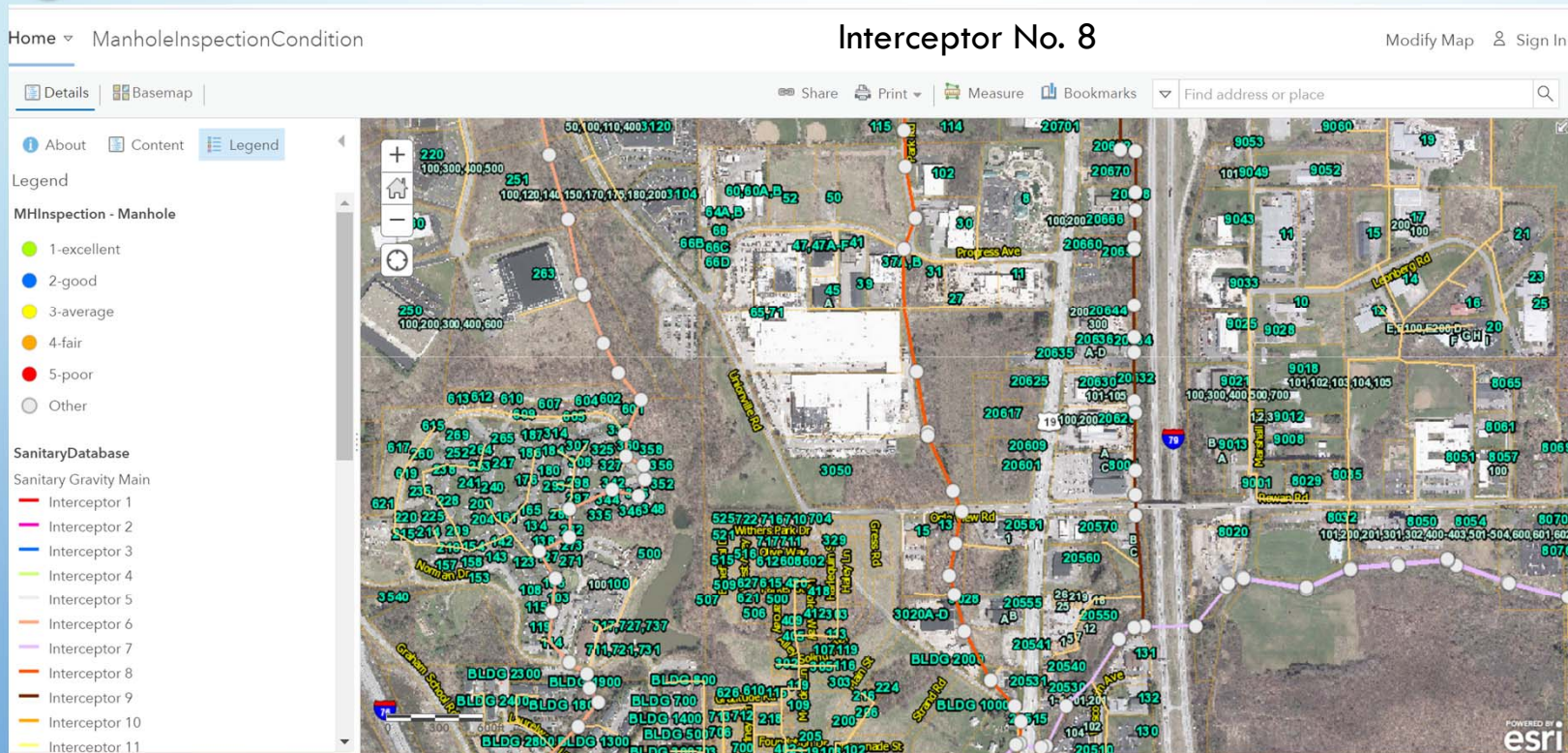
Presented By:
Jason Dailey; Kevin Kaplan; Greg Hoover

April 29, 2021

I&I PROGRAM MANAGEMENT

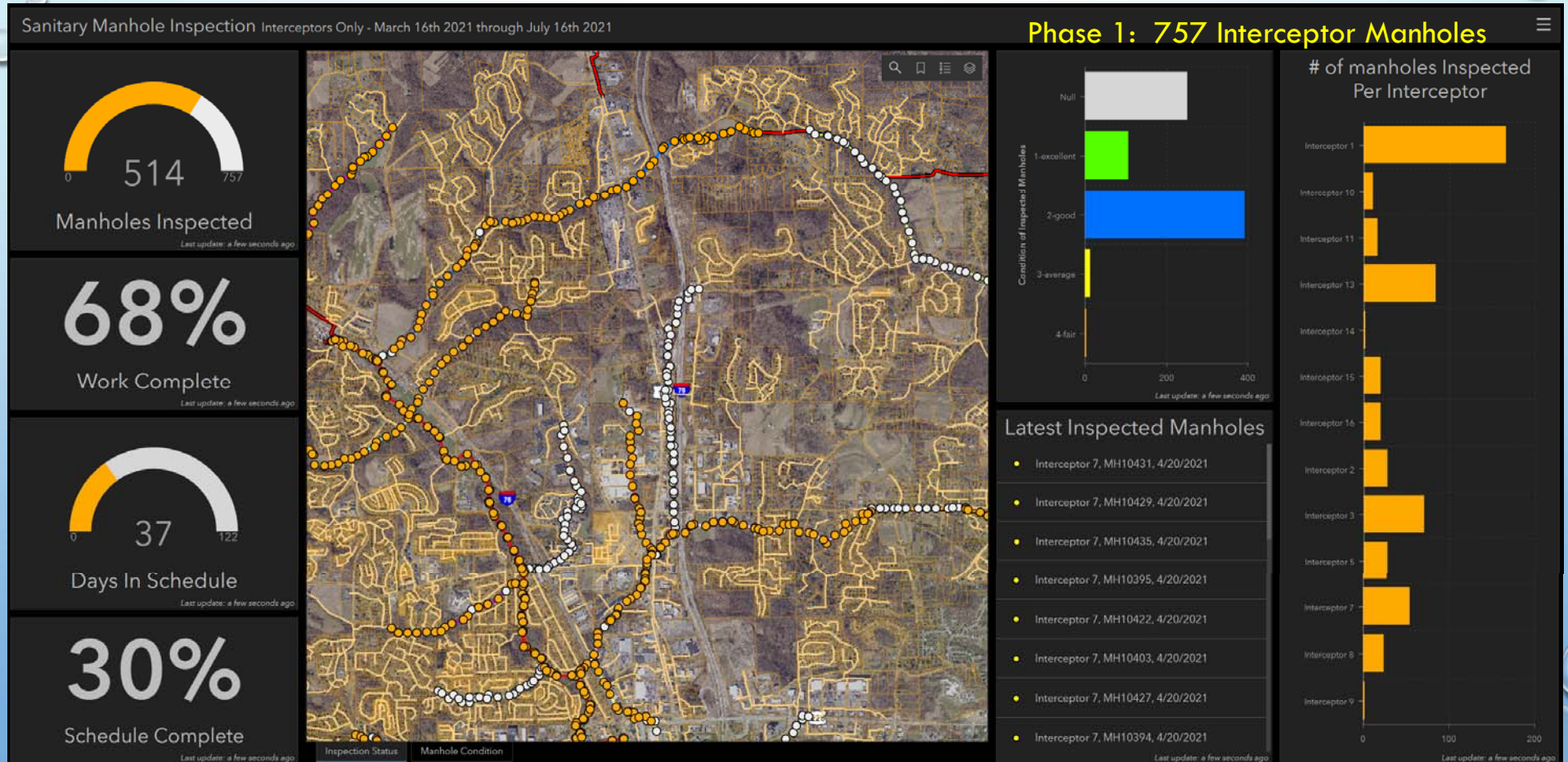


MANHOLE ASSESSMENT CHECKLIST

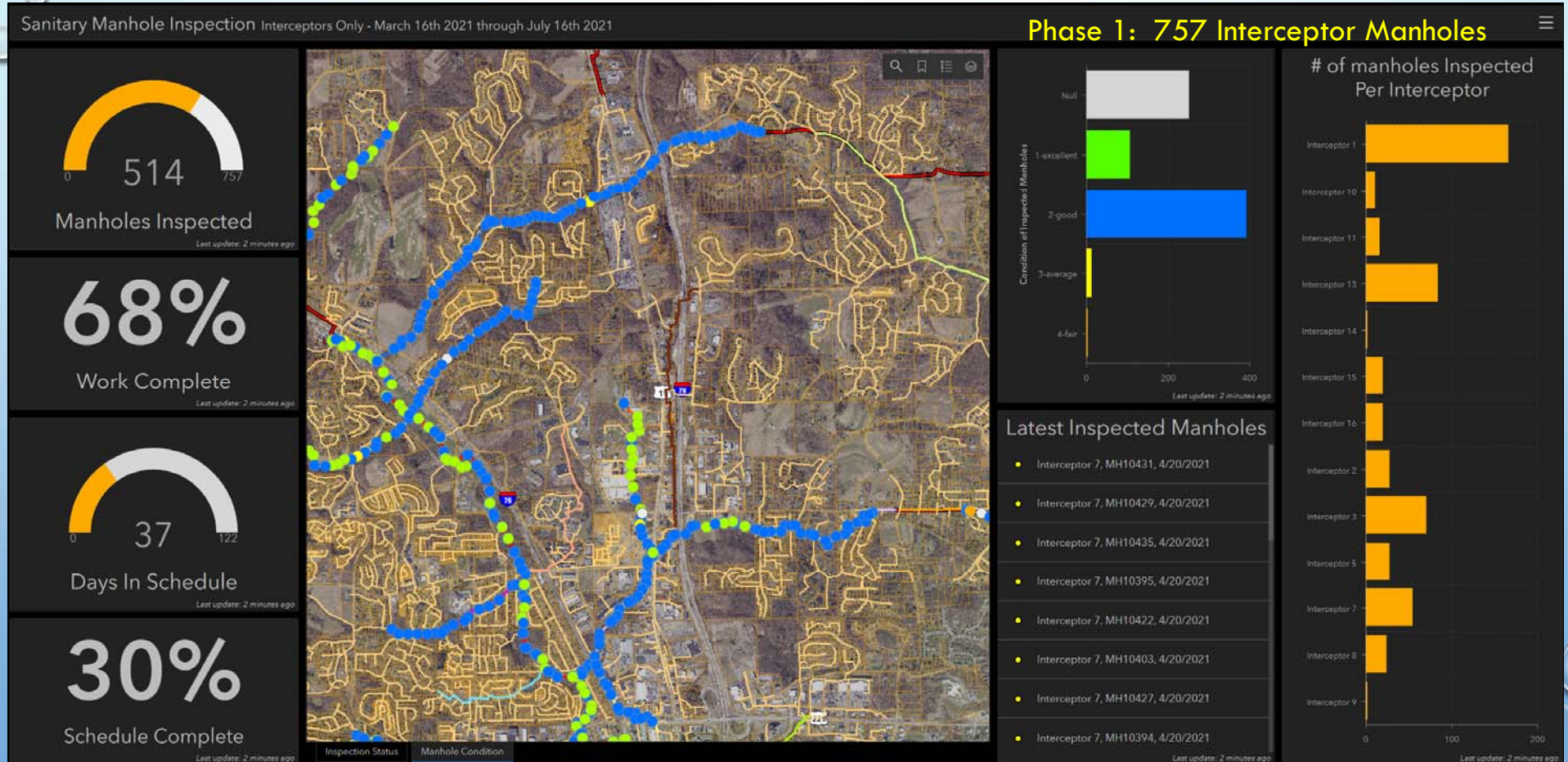


- ☒ Cover Fit
- ☒ Insert
- ☒ Ring
- ☒ Frame Seal
- ☒ Chimney
- ☒ Cone
- ☒ Wall
- ☒ Bench
- ☒ Channel

MANHOLE ASSESSMENT DASHBOARD



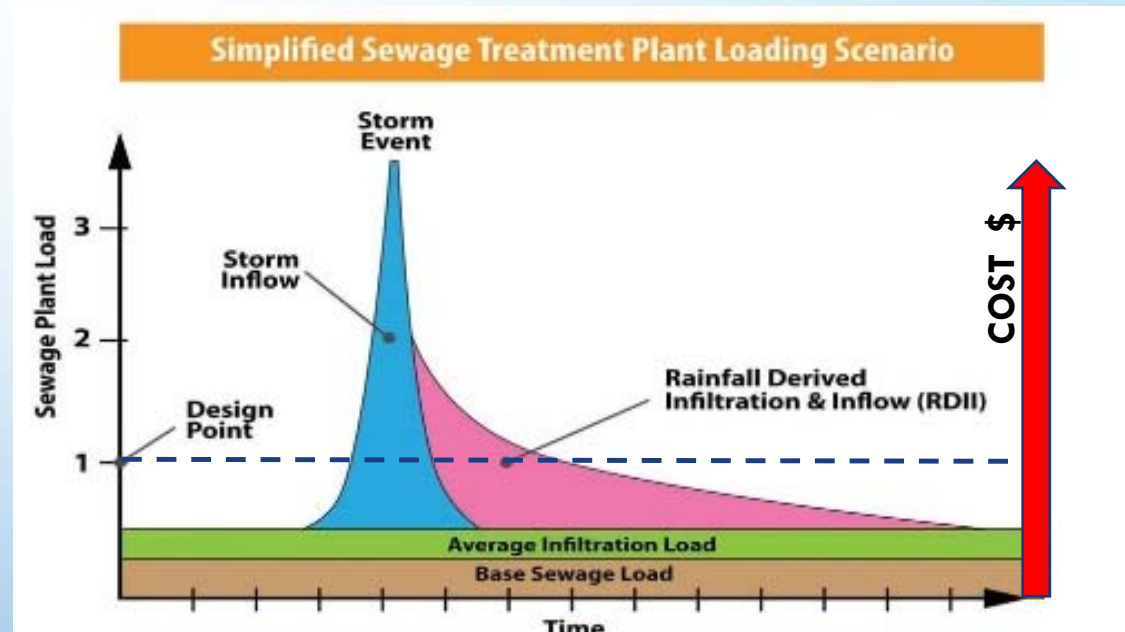
MANHOLE ASSESSMENT DASHBOARD



I&I PROBLEM

Problem

- Decrease in Capacity
- Increase in Costs



FLOW MONITORING

Why?

- Protect Our Investment
- Prioritize Capital Spending
- Ensure Customer Satisfaction



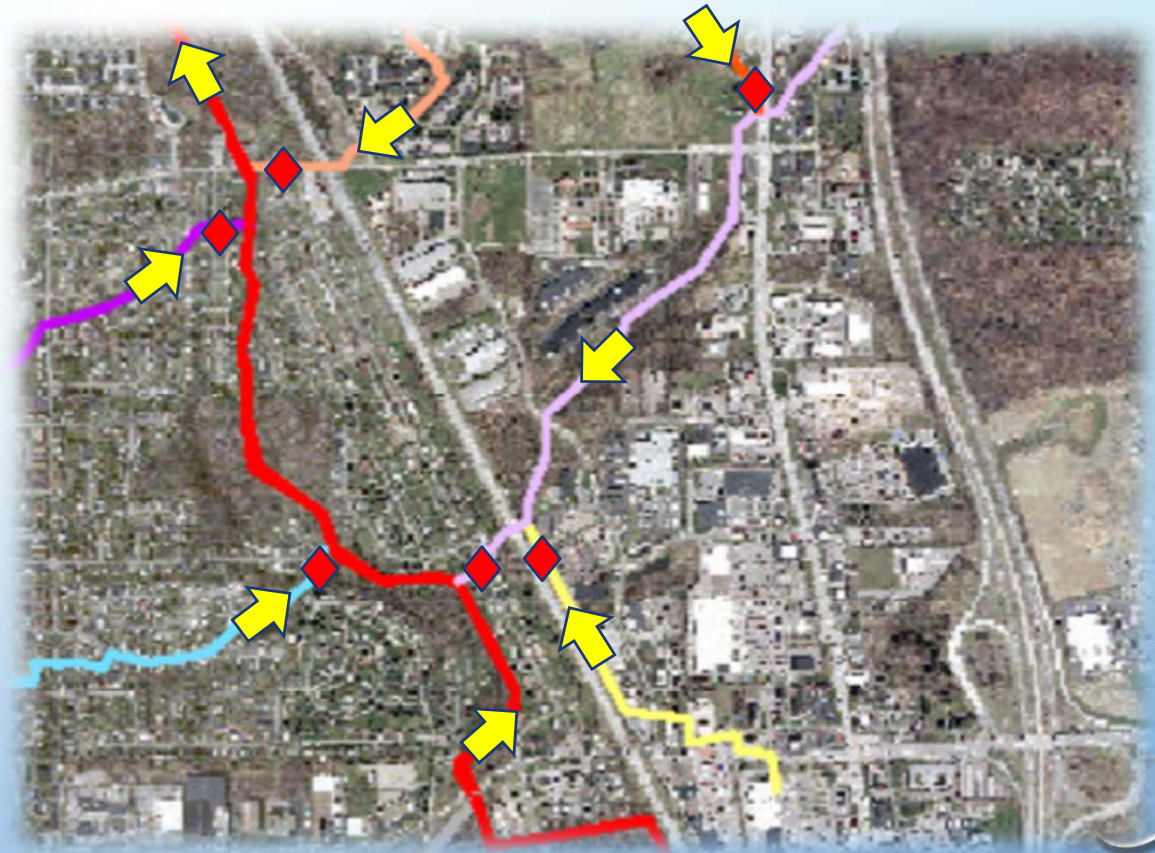
FLOW MONITORING PLAN & COSTS

Plan

- Monitor 16 Interceptors
- Analyze Data
- Make Recommendations

Budget

- Finalize Pricing
- Estimated Budget
\$110K/6mo



TIMELINE FOR I&I PROGRAM

March 2021	Initiate Manhole Inspection Program
April-July 2021	Flow Monitoring Study Commences
August 2021	Management I&I / Chapter 18 Repeal & Replace Presentation
October 2021	BOS Presentation on Results and Future Initiatives
November 2021	BOS Considers Chapter 18 Ordinance Adoption



