



Board of Supervisors Meeting Item #29

Update on the Rochester Road Improvements



7/30/2020

Rochester Road Improvements:



Graham School Road

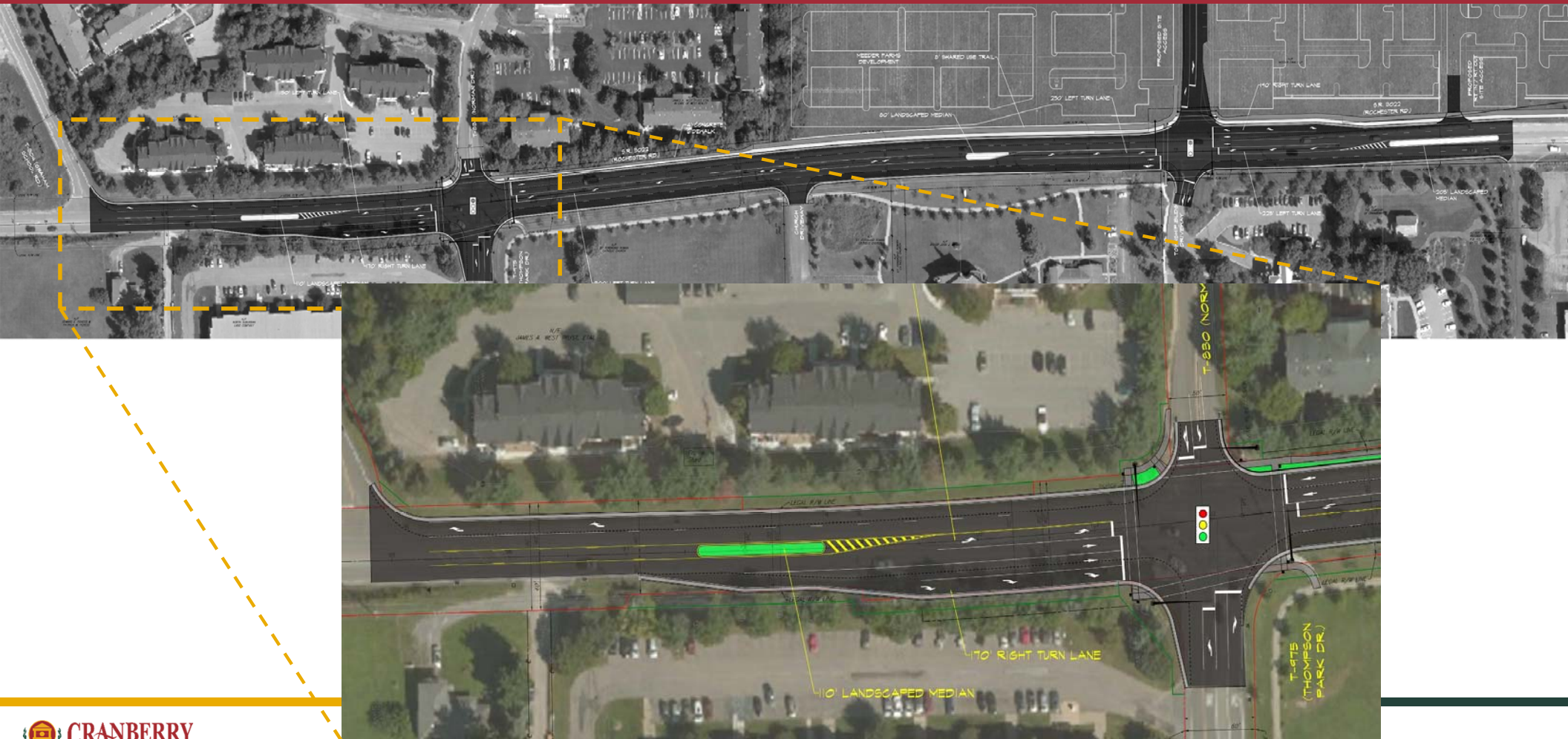
Thomson Park Drive

St. Ferdinand's Driveway

Municipal Center Entrance

Commerce Park Drive

Rochester Road Improvements:



Rochester Road Improvements:

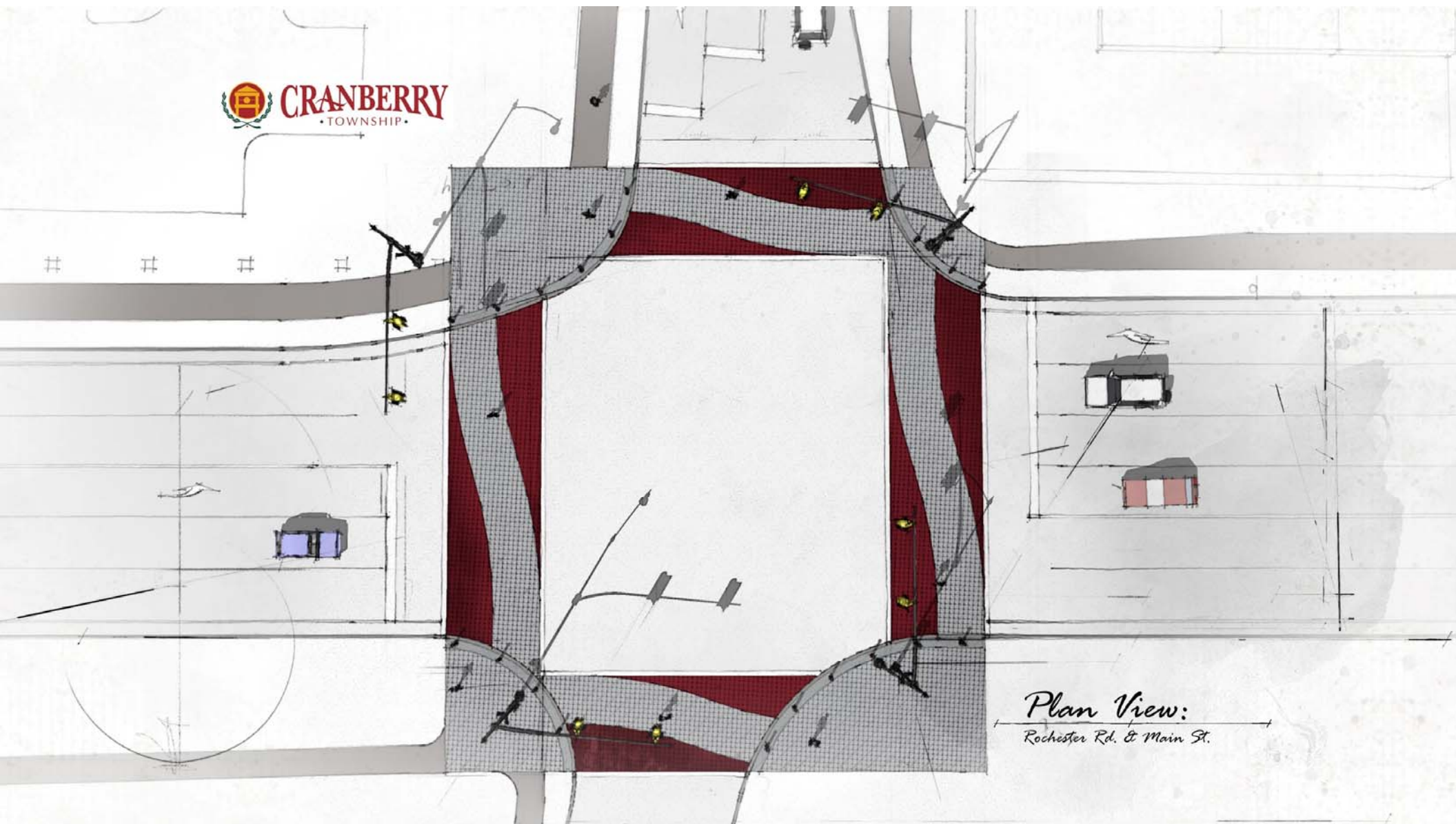


Rochester Road Improvements:

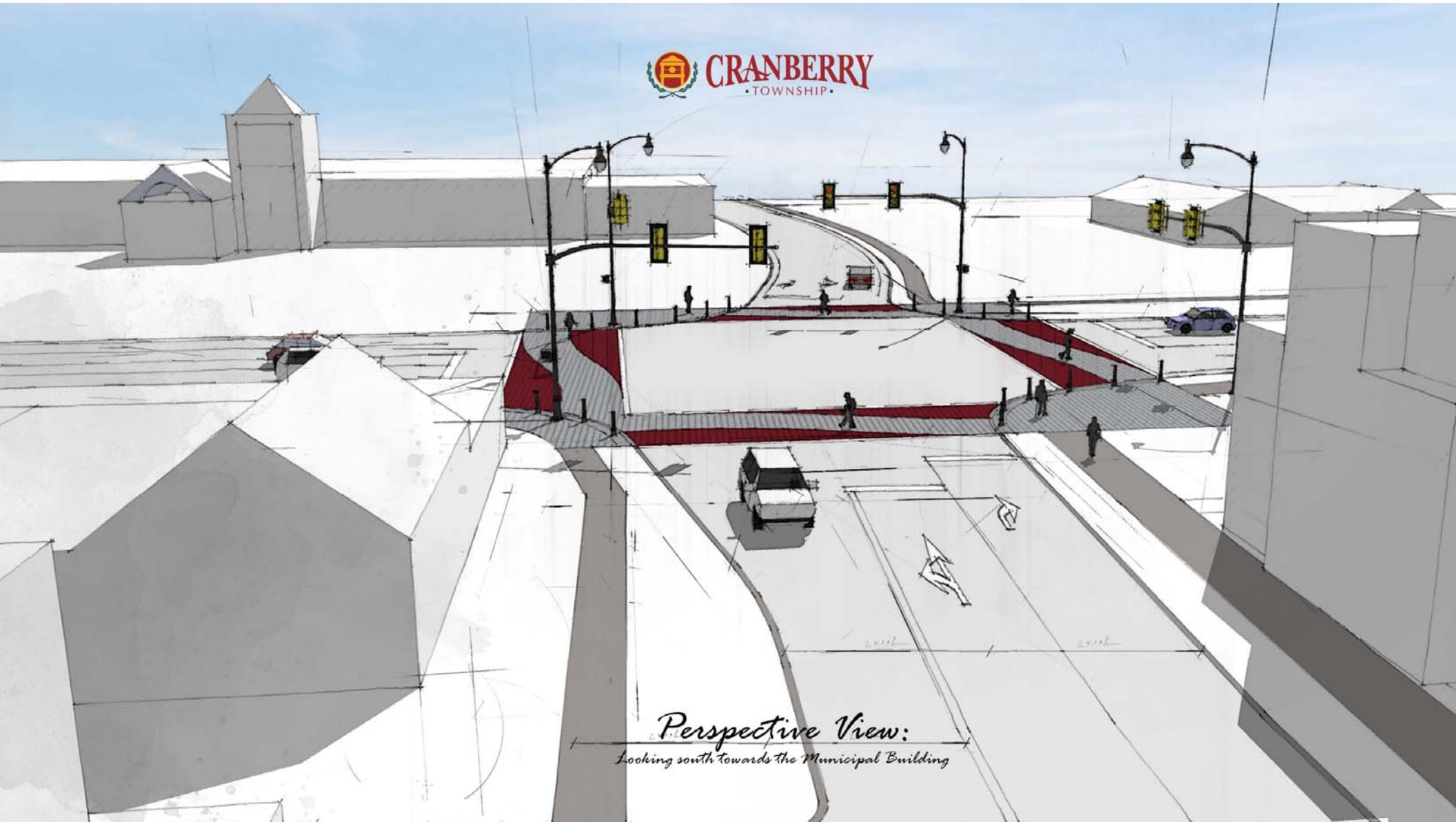


Municipal Center Intersection Details





Plan View:
Rochester Rd. & Main St.



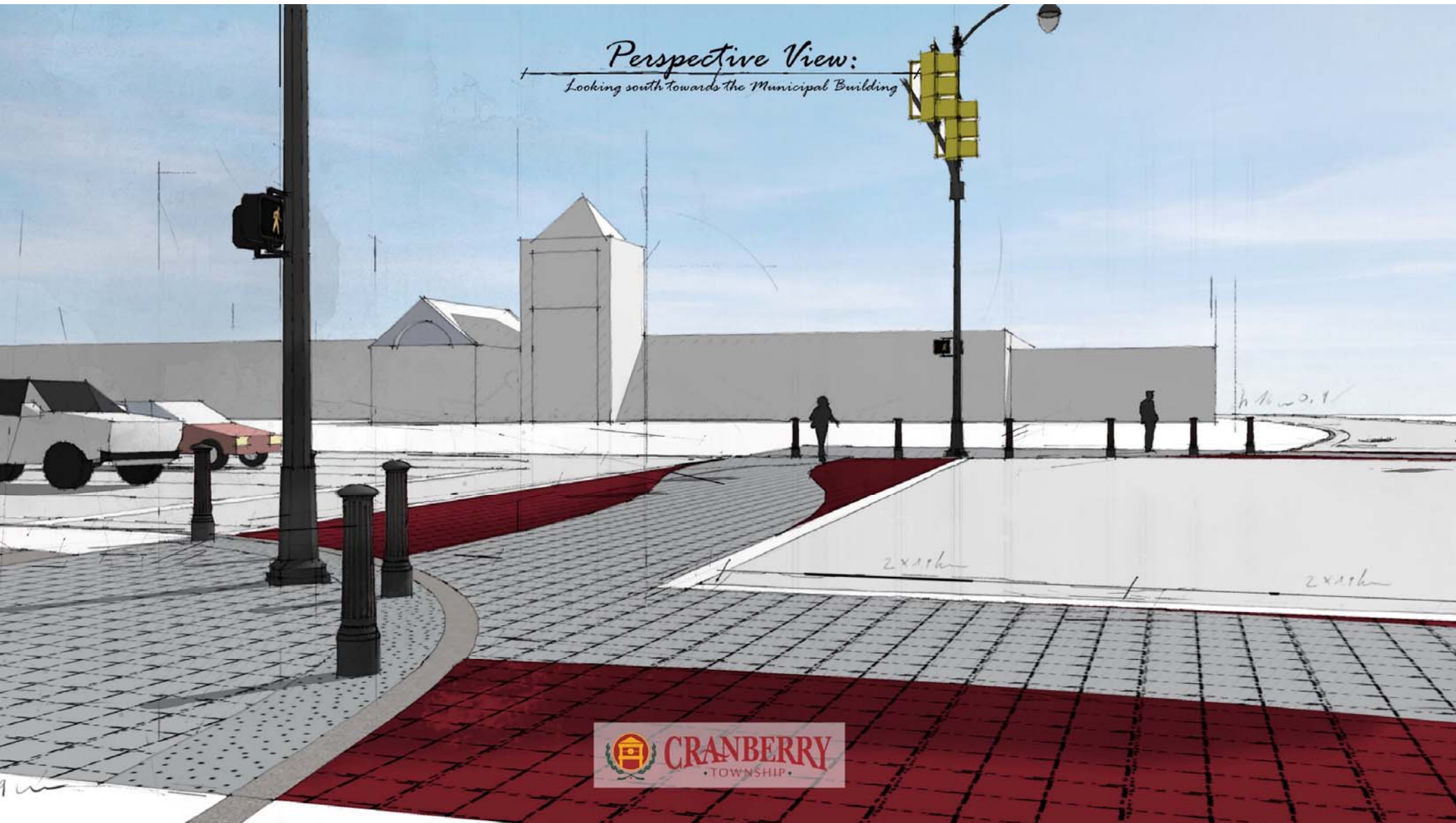
Perspective View:
Looking south towards the Municipal Building

Perspective View:

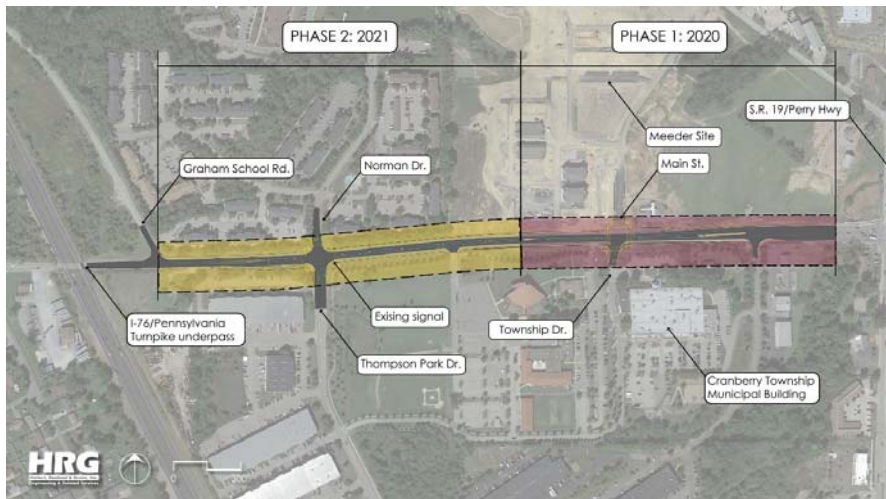
Looking south towards the Municipal Building



Perspective View:
Looking south towards the Municipal Building



Construction Sequence:



2020:

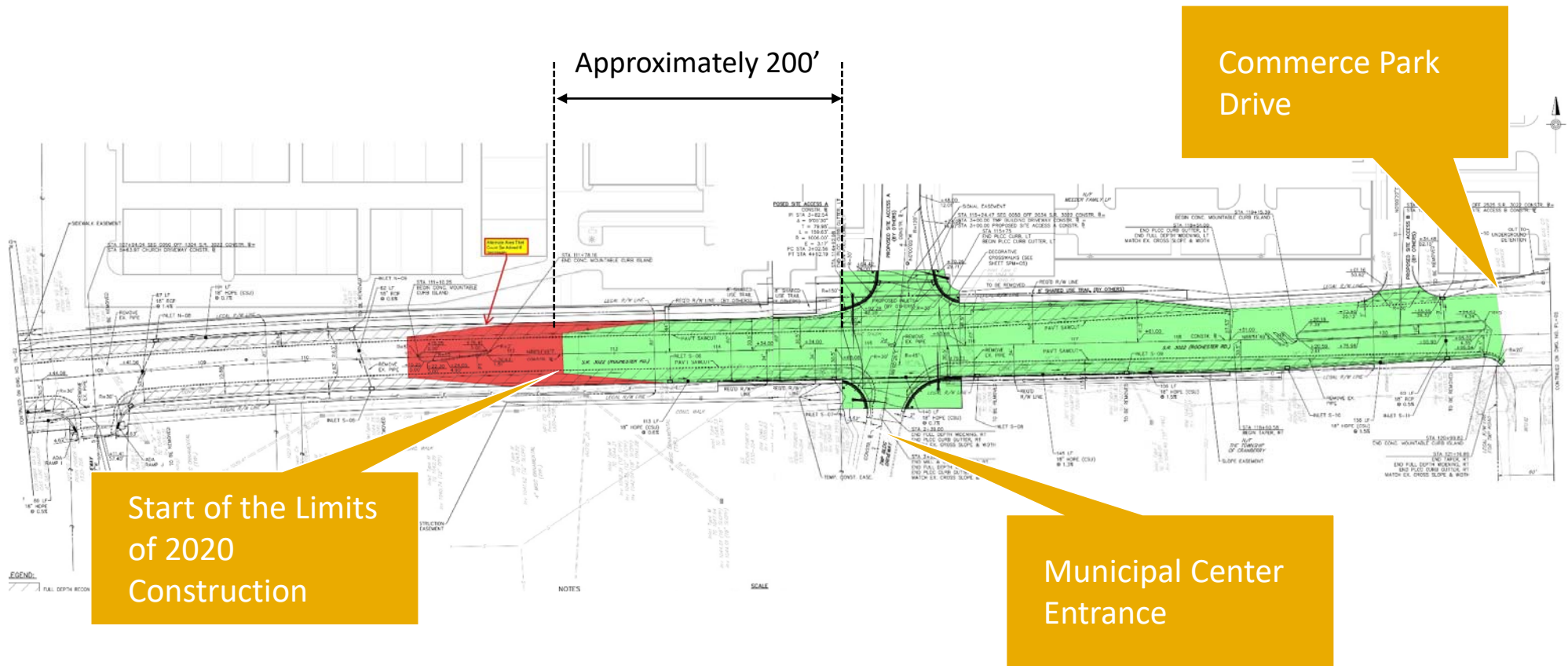
Starting 200' west of the Municipal Driveway, Rochester Road will be widened to Commonwealth Drive which, ties into previous widening project at Rt 19. This includes installation of the new signal at Main Street/Municipal Driveway.

1. The project will start with construction of the proposed Northern Lanes.
2. Upon completion of the northern lanes, construction will focus on the southern lanes within the 2020 project limits.
3. Installation of the new signal at the Municipal Center Entrance is anticipated in December or January.

2021:

During the second paving season, Rochester Road will be widened from Graham School Road to Main Street/Municipal Driveway. This includes signal replacement at Thomson Park Drive.

2020 Project Limits:



Summary

The Rochester Road Improvements:

- Construction is starting now and will be completed over the next two seasons.
- The improvements will widen the roadway to 5 lanes over the length of the project area.
- The intersection at Main Street and the Municipal Center entrance will focus on enhancing pedestrian connectivity between the Municipal Center and the Meeder Plan.